

FLOW[T]

by Nao Tamura

Thank you for choosing this product.

To help ensure it gives complete satisfaction, please install it according to these instructions and then pass the instruction to the appropriate person for retention and future reference.



IMPORTANT

- Ensure power to the circuit is off before wiring and installing the fixture and power supply unit. It is advised you use a qualified Electrician and all safety instructions must be followed to avoid a risk of injury and property damage.

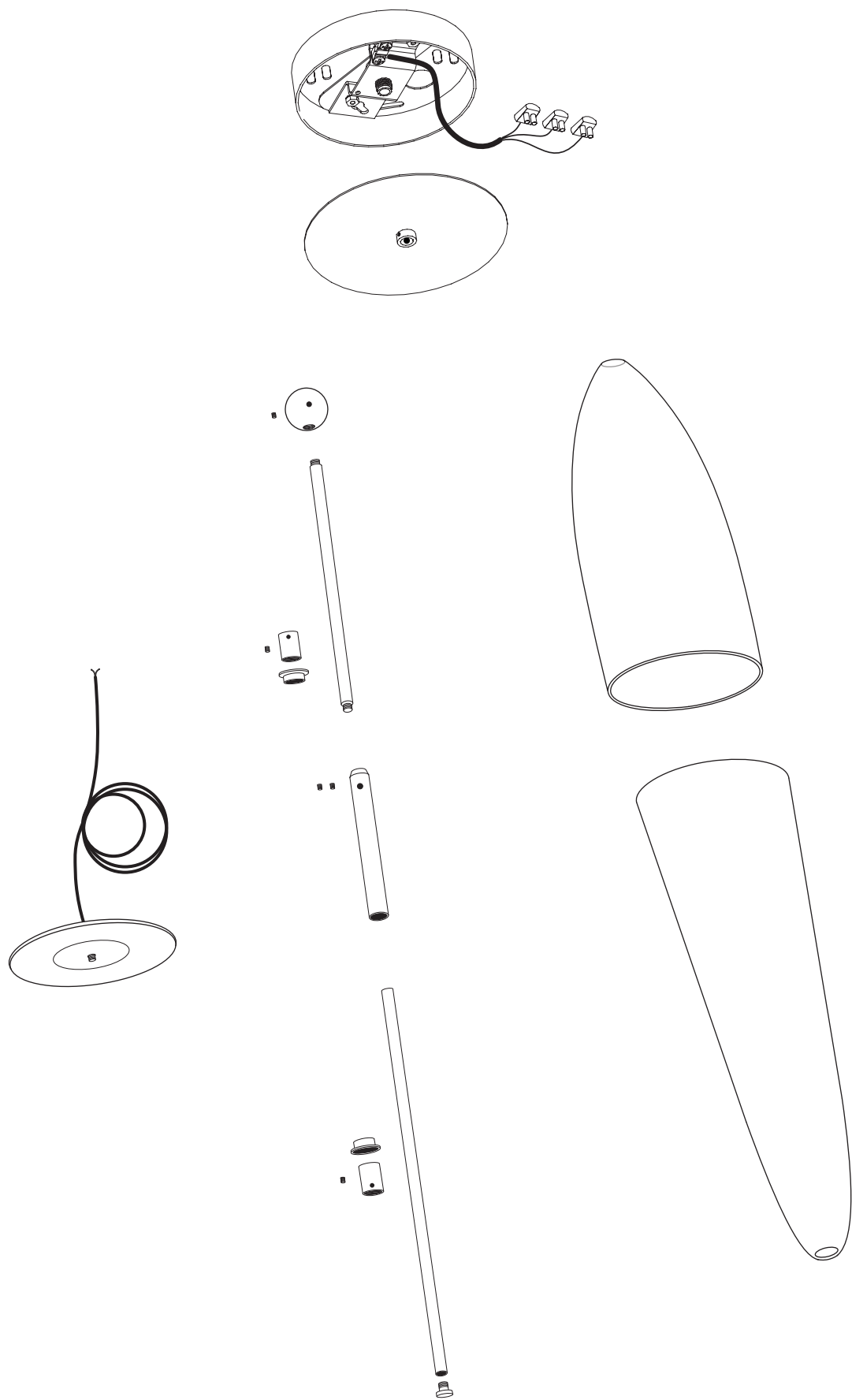
WARNING

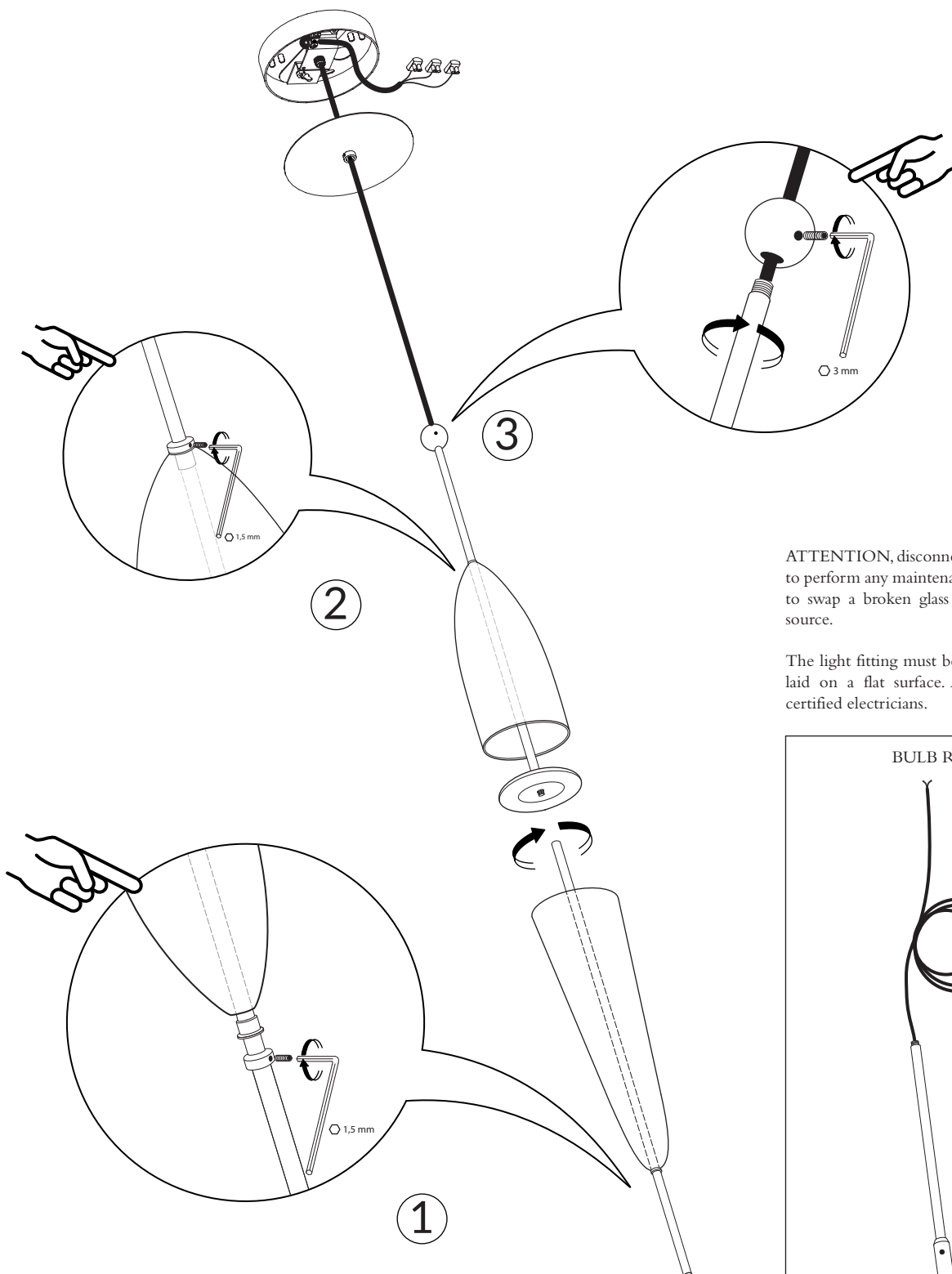
- **Do not** alter and/or replace any internal component without prior consultation with WonderGlass Ltd, similar conduct would end any warranty
- **Do not** use abrasive cleaning solutions or scraping materials
- **Do not** allow metal parts of cleaning equipment to touch the glass
- **Do not** allow water or cleaning residue to remain and dry on the glass surface

NOTE

- This lighting is designed for indoor use only
- To only function normally on the voltage shown in the specifications sheet
- Only cut cables once satisfactory height/length of the lamp is achieved, always leave extra cable wrapped inside the canopy for future adjustment should it be required (recommended to allow 30cm extra in length)

**WonderGlass will respond as promptly as possible to your issue.
Please contact our customer service: sales@wonder-glass.com**





ATTENTION, disconnect the light fitting from the ceiling to perform any maintenance operation. In PARTICULAR, to swap a broken glass shade and/or swap a faulty light source.

The light fitting must be handle with care at all times and laid on a flat surface. ALWAYS advise for the help of certified electricians.

BULB REPLACEMENT

