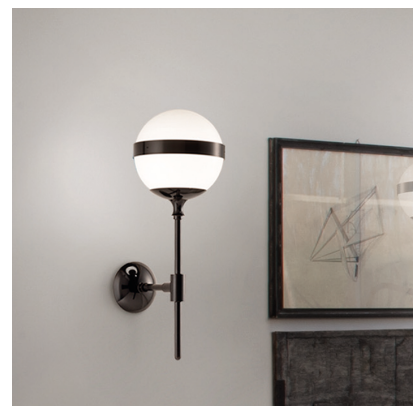


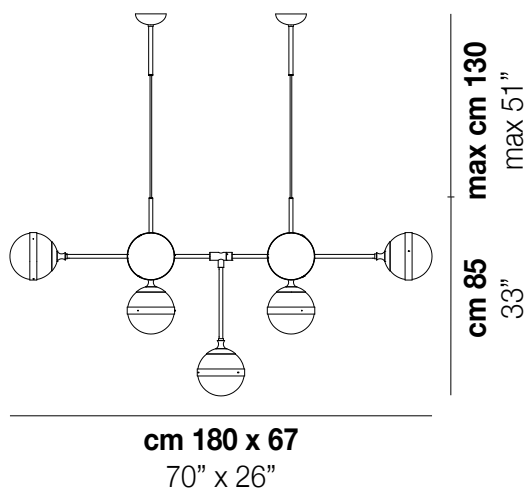
## PEGGY

Design HANGAR DESIGN GROUP SRL

## PEGGY SP 9



The white, blown handmade glass together with the glossy black metal, with a lead-effect treatment, interpret the polarity between black&white with the lightness of a rational and elegant design. With an impressive installation the lighting system lights up the Museum Café at Peggy Guggenheim Museum in Venice.



## PEGGY SP 9

TECHNICAL DATA:

CERTIFICATIONS:



LIGHT SOURCES

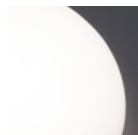
9x40w 120V/60HZ E12

VOLUME Mc 1,01  
 GROSS WEIGHT Kg 40  
 NET WEIGHT Kg 30

download

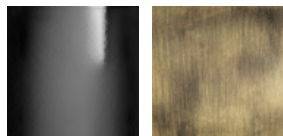


### SHADE FINISHING



BCLU

### FRAME FINISHING



NEL

OT

### OTHER VERSION AVAILABLE

Click on the version to go to the web version of the product



PEGGY SP