

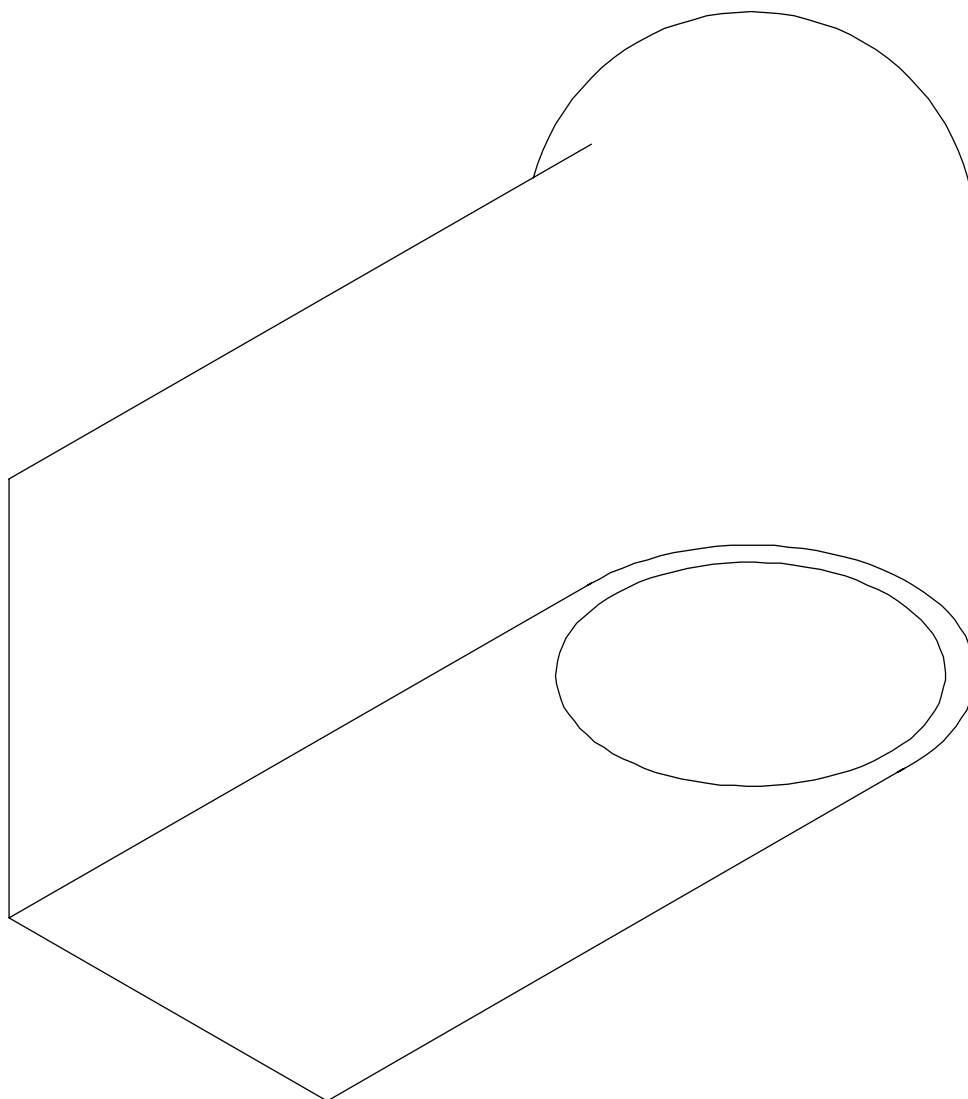
BELL INSTALLATION INSTRUCTIONS

Rakumba

CODE-RP-E-2311

REVISION 05.03.24

REVISED BY: LB



Bell Sconce
Classic



Bell Sconce
Large



Cast Bronze
Tumbled



Cast Bronze
Aged



Cast Aluminium
Tumbled



Powdercoat
Textured Black



Powdercoat
Textured White

BELL INSTALLATION INSTRUCTIONS

CODE-RP-E-2311

Rakumba

REVISION 05.03.24

REVISED BY: LB

Note: The instructional photographs below are for a Bell Sconce Classic in Cast Aluminium Tumbled, however the methodology remains the same.



- 1 Ensure you open the packaging from the folded tabs above the packaging label orientation.

Open the resealable bag, and retrieve the following components:

- Installation / Care Instructions
- White Cotton Gloves
- 2mm Allen Key

- 2 Please always use the **White Cotton Gloves** provided to gently handle the **Bell Sconce** and **Acrylic Diffuser** during installation.

Gently remove the **Bell Sconce** from the packaging and retrieve the **Acrylic Diffuser** positioned below.

- 3 Use the **2mm Allen Key** provided within the resealable bag to loosen the **M4x12mm Grub Screw**, positioned at the back end of the **Bell Sconce**.



- 4 Once you have loosened the **M4x12mm Grub Screw**, gently slide the **Bracket** out of the **Bell Sconce**.

- 5 Unravel the two core flex, and route it alongside the earth tag through the **Clear Grommet** in the back of the **Bracket**.

- 6 Having successfully disassembled the **Bell Sconce** into its core components, you may now proceed to install it at your chosen location.

BELL INSTALLATION INSTRUCTIONS

CODE-RP-E-2311

Rakumba

REVISION 05.03.24

REVISED BY: LB

Note: The instructional photographs below are for a Bell Sconce Classic in Cast Aluminium Tumbled, however the methodology remains the same.



- 7 Please ensure a **24mm Hole** is drilled in the centre of the desired mounting location.

The **Bell Sconce** utilises a Class I, 230VAC LED Module, therefore it requires a connection to the earth tag provided on the **Bracket**.

Ensure a registered electrician completes the electrical termination. Connect the active, neutral and earth cables to the mains wiring and ensure insulation is applied.



- 8 Please ensure a suitable fastening method is implemented to support the **Bell Sconce**.

Once terminations are completed, carefully route the excess cables into the wall cavity.

Position the **Bracket** in the desired location and secure it to the wall using the vertical fixing groove.



- 9 Use a level to ensure the **Bracket** is square before securing it to the wall using the horizontal fixing groove.



- 10 Please ensure the secondary vertical fixing groove on the **Bracket** is utilised when installing the **Large Bell Sconces**.

Ensure the **Bracket** has remained square and level once it is securely fastened to the wall.



- 11 Carefully slide the **Bell Sconce** on to the **Bracket**, allowing the ramped back lip to guide and nest onto the **Bracket**.



- 12 Use the **2mm Allen Key** provided within the resealable bag to tighten the **M4x12mm Grub Screw**.

Tighten the **M4x12mm Grub Screw** until the **Bell Sconce** is fastened securely to the **Bracket**.

BELL INSTALLATION INSTRUCTIONS

CODE-RP-E-2311

Rakumba

REVISION 05.03.24

REVISED BY: LB

Note: The instructional photographs below are for a Bell Sconce Classic in Cast Aluminium Tumbled, however the methodology remains the same.



- 13 Ensure the **Bell Sconce** has remained square and level once it is securely fastened to the **Bracket**, using the **M4x12mm Grub Screw**.



- 14 Insert the **Acrylic Diffuser** into the opening of the **Bell Sconce**.

Align the grooves of the **Acrylic Diffuser** with the **Bayonet Mount Plate**, rotate the diffuser in a clockwise direction to guide it into position.



- 15 Bell Sconce installation is now complete and you may test the illumination.

If there are any issues, please refer to the troubleshooting guide below.

TROUBLESHOOTING

Issue 1: No light source illuminated when tested during installation.

Potential Resolution: Check electrical termination at connection point is correct and secure.

Issue 2: Bracket / Bell Sconce is not sitting flat and flush against the wall.

Potential Resolution: Ensure 24mm hole cavity was drilled at the centre of the desired mounting location.

Potential Resolution: Ensure suitable fixings have been used to attach the **Bracket** to the wall.

Issue 3: Bracket is not sitting square and level.

Potential Resolution: Ensure **Bracket** has remained square and level once securely fastened to the wall.

Issue 4: Bell Sconce is not sitting square and level.

Potential Resolution: Ensure the **Bell Sconce** has remained square and level once the **M4x12mm Grub Screw** has been tightened.

Issue 5: Diffuser is not sitting square and level.

Potential Resolution: Ensure the **Diffuser** has been fully rotated, and locked into position on the **Bayonet Mount Plate**.
