

ENG WARNING – RISK OF FIRE AND ELECTRIC SHOCK.

SUITABLE FOR DRY LOCATIONS ONLY

FR ATTENTION – RISQUE D'INCENDIE, RISQUE DE CHOC.

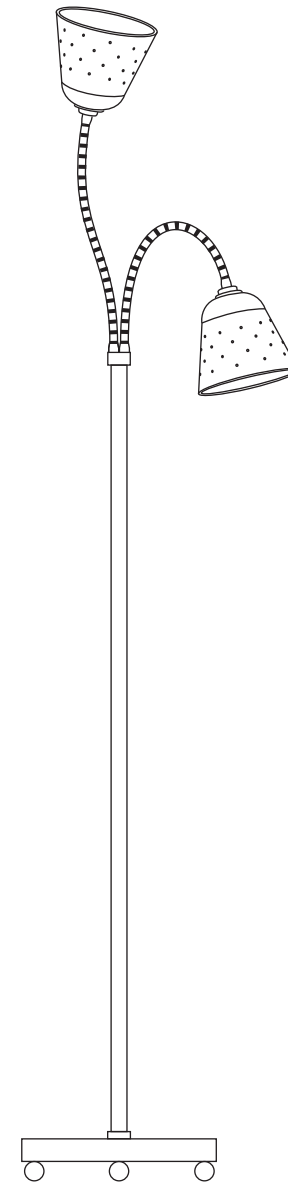
POUR EMPLACEMENTS SECS SEULEMENT

- Ensure the lamp (bulb) type and max wattage is followed - do not exceed. Take care not to overtighten the lamp.
- Do not touch the lamp or lampholder while in operation, as both become very hot.
- Turn off and unplug the fitting, leaving to cool before changing the lamp. Dispose of old lamps carefully.
- Adjust the light only when power to the fitting is off and it has been left to cool.
- Never leave a fitting without a lamp in position.
- Keep the light fitting away from combustible materials such as soft furnishings.
- Ensure children do not play with the light fitting.
- Ensure the light is positioned on a solid, level and non-slip surface and make sure the position of the cable does not pose a trip hazard.
- If the electrical flex or electrical components become damaged at any point, the fitting must be unplugged from the power supply immediately and not operated until the damaged parts are fixed/replaced.
- For use in a dry, indoor environment only. Ensure the fitting does not come into contact with any liquids.

Cleaning and Maintenance

All brass components can be cleaned with a metal polish to remove tarnishing with the exception of the flexible arm. **Do not use polishes or abrasives on the flexible arm as this may compromise the fittings ability to maintain its shade position.** Bone china can be cleaned by hand, with a soft damp cloth with a diluted, mild detergent (nonabrasive) if necessary. The painted metalwork can be cleaned with a soft dry cloth. Switch off power to the fitting before cleaning.



Established in 1990, Original BTC manufactures relaxed, familiar lighting for traditional and contemporary homes. All products are hand-assembled in Oxfordshire from high quality components, produced in the UK.



Alma Floor Light

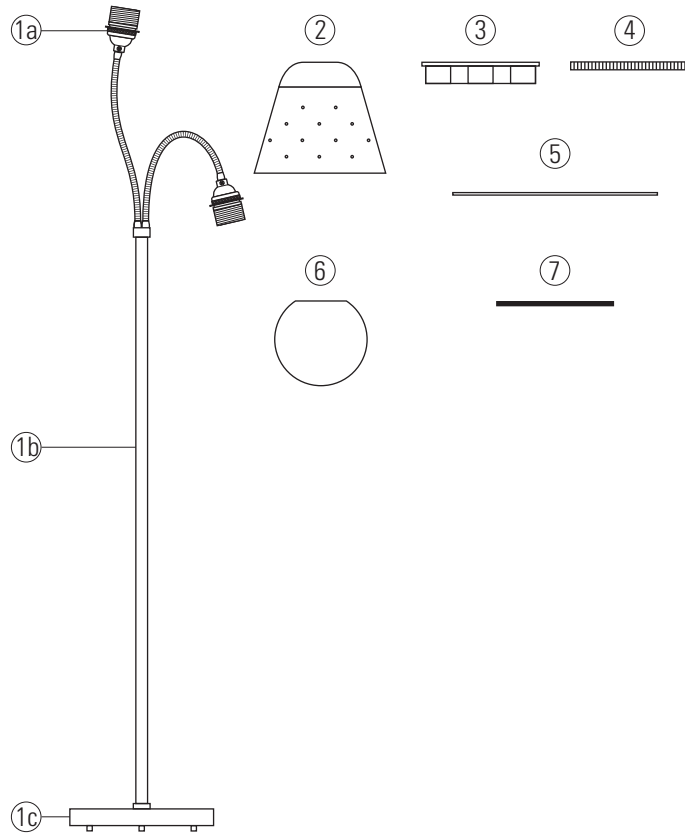
| 120V AC 60Hz | DRY |

- US-FF701N Alma Floor Light, Natural
- US-FF701R Alma Floor Light, Coral
- US-FF701G Alma Floor Light, Seaweed

LAMP GUIDANCE : NB lamp not included			
BASE	SHAPE	TYPE	WATTAGE*
 E26	 A	LED*	2 x 6W (recommended)
		Incandescent	2 x 40W Max

* Wattage value provided as a guide to suitable lamps. Lower wattage than stated may be used. 2700K (warm white) recommended.

Contents



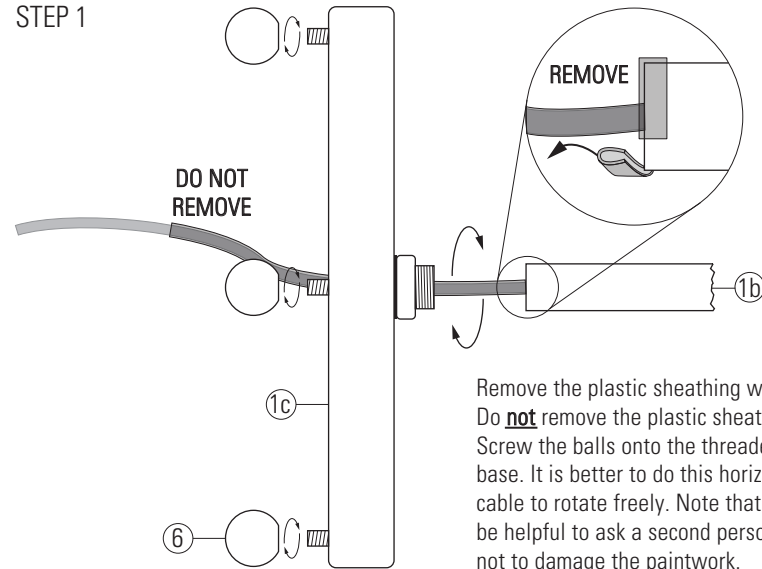
Contents

- 1 Main body
- 1a Lampholder
- 1b Stem
- 1c Base
- 2 Shade (x2)
- 3 Plastic shade ring (x2)
- 4 Brass shade ring (x6)
- 5 Brass shade disc (x2)
- 6 Brass ball feet (x4)
- 7 Rubber gasket

PLEASE READ THE INSTRUCTIONS ON THE REVERSE BEFORE YOU ASSEMBLE & USE YOUR LIGHT

Assembly Diagrams

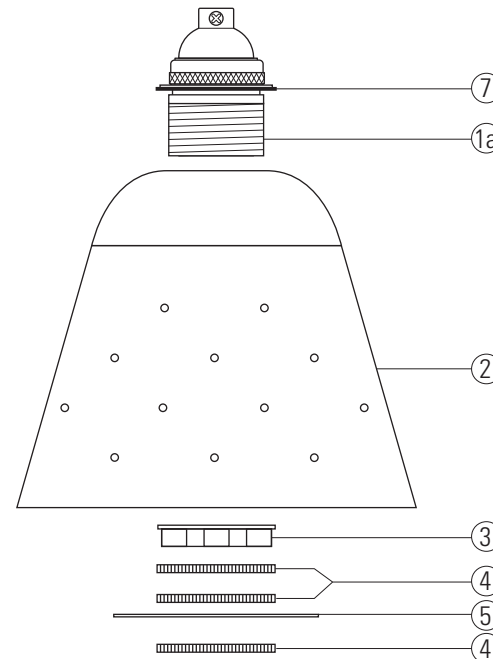
STEP 1



Remove the plastic sheathing which protects the end of the stem. Do **not** remove the plastic sheathing which protects the cable. Screw the balls onto the threaded stems. Screw the stem on to the base. It is better to do this horizontally (i.e. on its side) to allow the cable to rotate freely. Note that the fitting is very heavy, so it may be helpful to ask a second person to assist in this task. Take care not to damage the paintwork.

STEP 2

Assemble the shades as shown below. The plastic shade ring is a spacer and is held in place using the first brass shade ring. The brass shade disc is held in position by the remaining two brass shade rings.



STEP 3 (OPTIONAL)

The floor balls can be adjusted to ensure the product remains level on uneven surfaces, as shown below:

