

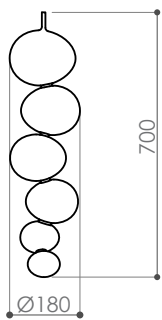
melogranoblu

HYDRA ORGANIC glass

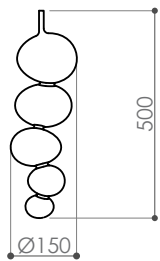
design E. Rocchi & M. Crema - 2017

DESCRIZIONE	Hydra system hand blown glass pendant
Environment:	Indoor
Mounting:	Suspension with metallic mesh cord or with steel cable
Body:	Metallized or transparent hand blown glass
Weight:	1300 g (large), 700 g (medium), 520 g (small)

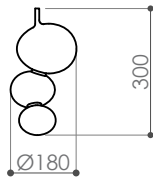
dimensions in mm



Organic large



Organic medium



Organic small



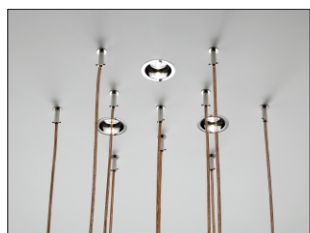
melogranoblu

LIGHT SOURCE USABLE

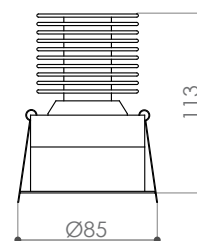
IP20   CE **LED**

↳ *INDIRECT LIGHT_ outer glass source*

↳ RECESSED (only with false ceiling)



Recessed LED spotlight 10W, 24Vdc, 2700 K cri93 optic 6° circular body ø 85 mm.

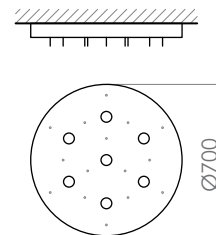


↳ CEILING

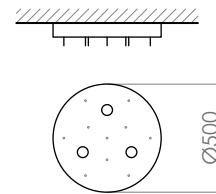
↳ standard dimensions:



Round ceiling LED Ø 70 cm varnished or nikel plate 7 x 10W LED dimmable, 2700 K optic 10°. 15 fixing supports for metallic mesh cords.



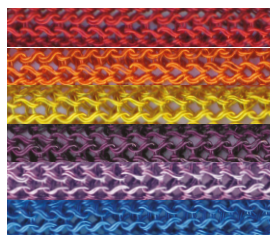
Round ceiling LED Ø 50 cm varnished or nikel plate 3 x 10W LED dimmable, 2700 K optic 10°. 10 fixing supports for metallic mesh cords.



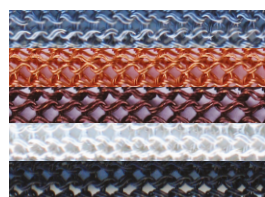
↳ custom: melogranoblu can design and product custom ceilings

HANGING SYSTEMS

↳ *METALLIC MESH CORD Ø 8mm*



#T11 Red
#T39 Orange
#T26 Gold
#T36 Purple
#T35 Wistaria
#T12 China Blue



#T08 Titanium
#T00 Copper
#T20 Brown
#T07 Silver
#T21 Black