

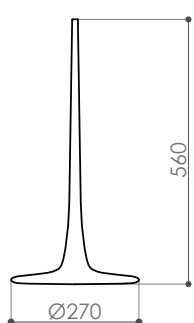
# melogranoblu

## HYDRA LHASA glass

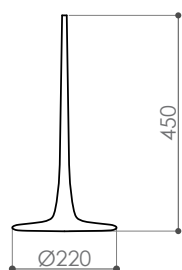
design E. Rocchi & M. Crema - 2008

<b>DESCRIZIONE</b>	Hydra system hand blown glass pendant
Environment:	Indoor
Mounting:	Suspension with metallic mesh cord or with steel cable
Body:	Frosted or transparent ruled hand blown glass
Weight:	760 g (large), 560 g (medium), 390 g (small)

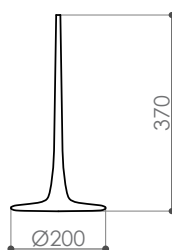
dimensions in mm



Lhasa large



Lhasa medium



Lhasa small



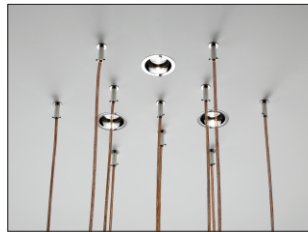
# melogranoblu

## LIGHT SOURCES USABLE

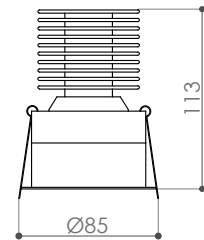
IP20   CE **LED**

↳ *INDIRECT LIGHT\_ outer glass source*

↳ *RECESSED (only with false ceiling)*

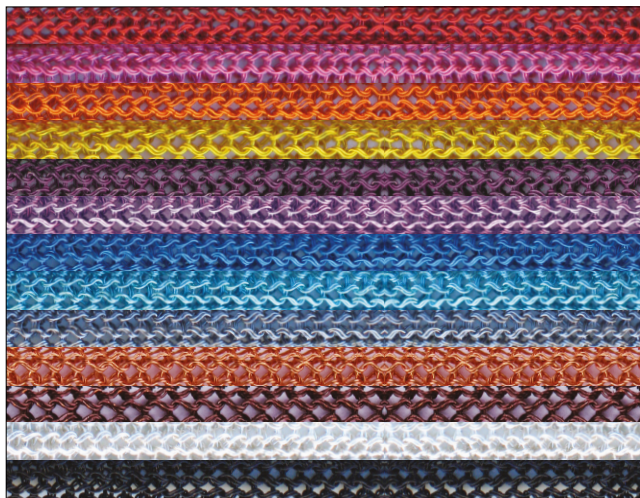


Recessed LED spotlight 10W,  
24Vdc, 2700 K cri93 optic 6°  
circular body ø 85 mm.



## HANGING SYSTEMS

↳ *METALLIC MESH CORD Ø 8mm*



#T11 Red  
#T34 Fuxia  
#T39 Orange  
#T26 Gold  
#T36 Purple  
#T35 Wistaria  
#T12 China Blue  
#T29 Turquoise  
#T08 Titanium  
#T00 Copper  
#T20 Brown  
#T07 Silver  
#T21 Black

↳ *STEEL CABLE Ø 0,6 mm*

