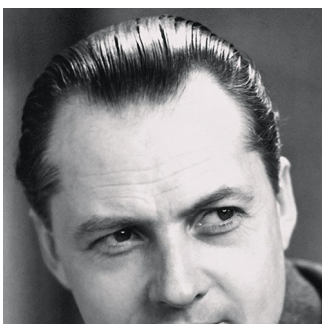
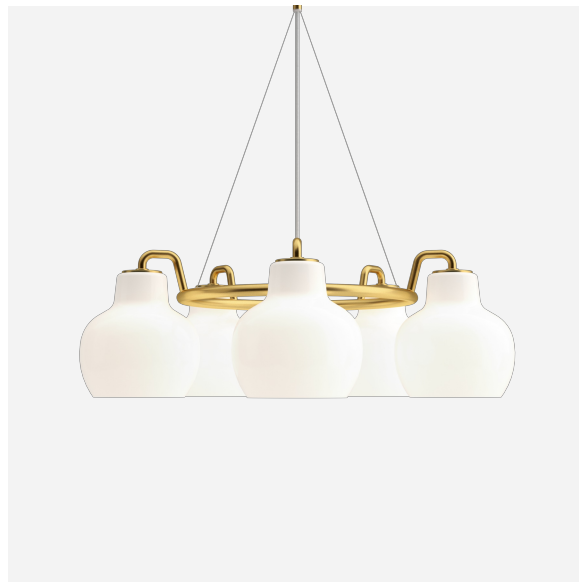


# VL Ring Crown 3-5-7

5 / A-19/medium / 120V / Brass/glossy opal glass / WHITE TEXTILE / - / - / 5741925465

The pendant emits light directed primarily downwards.  
The opal glass provides a comfortable and uniform illumination of the area around the fixture.



## Vilhelm Lauritzen

Vilhelm Lauritzen (1894–1984) is one of the most significant architects in the history of Denmark; he was the trail-blazing figurehead of Danish functionalism. A number of his buildings – Nørrebro Theatre (1931–32), Daells Varehus department store (1928–35), Radiohuset (1936–41) and the first airport built in Kastrup (1937–39) – represented the concentrated essence of contemporary life.



Set location - The Silo

**louis  
poulsen**

Design to Shape Light

[louispoulsen.com](http://louispoulsen.com)

## Product info

### Finish

Glossy, hand blown white opal glass. Satin polished brass, untreated.

### Materials

Shades: Hand blown, 3-layered, polished opal glass. Suspension: Untreated brass, will patinate.

### Mounting

Mounting: Suspension type: 3x stainless steel aircraft cables. Suspension length: 12'. Canopy: Brass. Cord type: 3-conductors, 18 AWG white braided fabric covered cord. Cord length: 12'.

### Sizes and weight

Width x Height x Length (in.) | 27.2 x 9.2 x 27.2 Max 18.9 lbs | 21.7 x 9.2 x 21.7 Max 13.8 lbs | 35.2 x 9.2 x 35.2 Max 24.2 lbs

### Compliance

Compliance: cULus, Dry location.

### Light source

A-19/medium

### Information

Electrical:

System Wattage: 45W or 105W

LED Wattage: 41 W or 97 W

Delivered lumens: 1,808 - 6,500

Efficacy: 40.2 lm/W - 61.9 lm/W

Certifications:

cULus, Dry Location

Protection class IP20

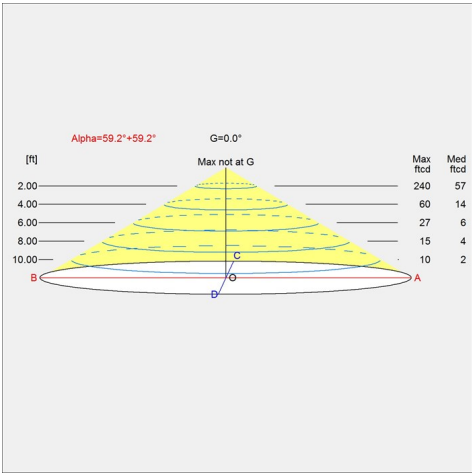
Controllability: Phase dimming

Actual performance dependent upon screw-base lamp used.

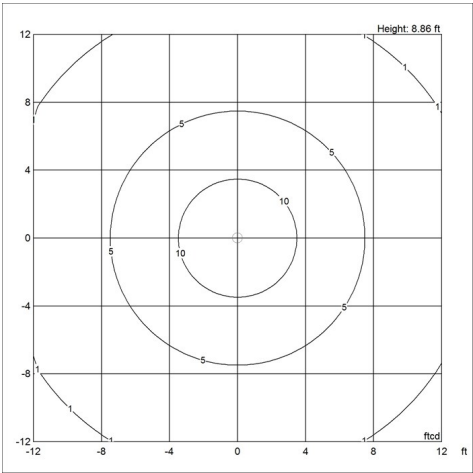


# Light distribution diagrams

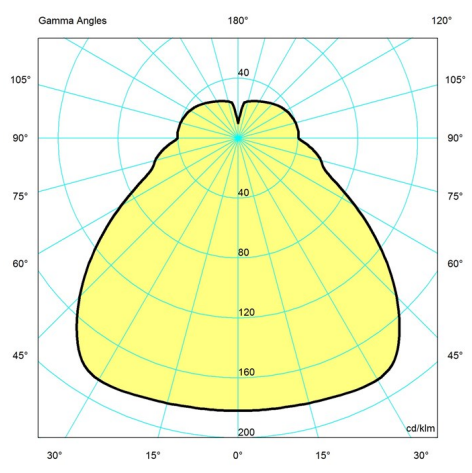
Cartesian



Isolux



Polar



## Data specifications

BUG Rating	-
Class	-
Efficacy	-
IK class	-
IP class	20
L80B10 (hours)	-
Length	27.2
Lumen	-
Net Weight	18.942
SDCM	-

Built-in Height	-
CRI	-
Height	9.2
Inrush Current	-
Kelvin	-
L80B50 (hours)	-
Light source	A-19/medium
Min. Dim Level (%)	-
Power Factor (P = 100 % / P = 50 %)	-
Standby (W)	-

## VL Ring Crown 3-5-7

Surges	-
Watt	-
Wind Load (ft2)	-

UGR Transversal / Axial	-
Width	27.2