

PH 3½-2½ TABLE

Project name:

Project type:

Notes:



Design

Poul Henningsen

Product description

Portable fixture.
Terse and iconic design.
The size of the three shades is adjusted for optimum performance and comfort.
Interior surfaces of glass shades sandblasted to diffuse light.
Interior surface of top shade in white to direct light downward.
Member of a family products of various sizes and type.
Available in four colours.

Variant options

Color	Light source	Voltage frequency
<div><div></div>Green</div>	G16.5/IF candelabra US	120V
<div><div></div>Red</div>		
<div><div></div>Wht</div>		
<div><div></div>Yellow</div>		

Light description

The fixture emits glare free, comfortable light.

Mounting

Portable fixture plugs into standard wall outlet.

Finish

Green, Red, Wht, Yellow

Material

Top shade: spun aluminum, 1. 5mm (0. 06") thick, wet painted.
Lower shades: mouth blown white glass, 1. 5mm (0. 06") thick.
Struts and socket cover: cast copper, bronze finished.
Base: steel with bronze finished, copper cover.
Stem: extruded copper, bronze finished, 2. 0mm (0. 08") thick.
Switch: on/off, phenolic, on cord.
Socket: Porcelain, medium base for A-19, frosted envelope lamps.

Weight

Min: 5.587 lbs Max: 5.587 lbs

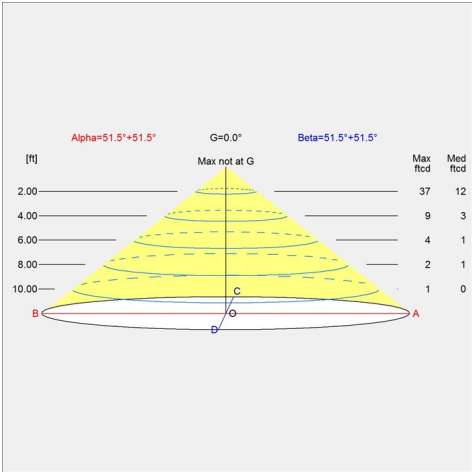
Voltage

120V

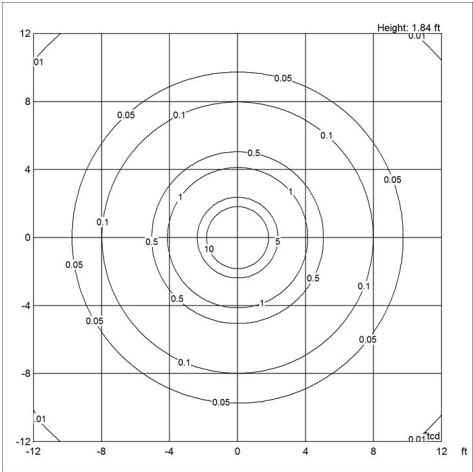
Light distribution diagrams

For the full data set on all variants, see louispoulsen.com.

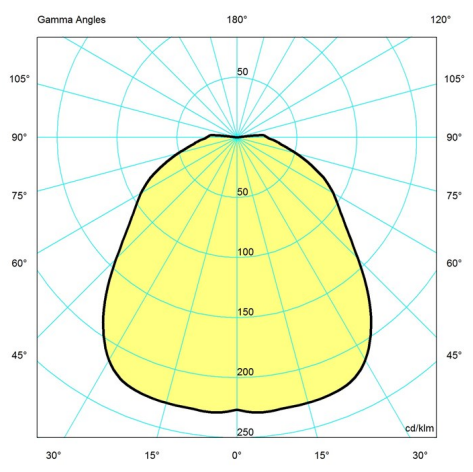
Cartesian







Isolux



Polar



Variant options

Color	Light source	Voltage frequency	Variant number
 Wht	G16.5/IF candelabra US	120V	5744902715
 Red	G16.5/IF candelabra US	120V	5744902702
 Yellow	G16.5/IF candelabra US	120V	5744902728
 Green	G16.5/IF candelabra US	120V	5744902731