



GABRIEL SCOTT

EST. 2012

372 Broome Street, NY, New York 10013  
12 Old Burlington Street, London, Mayfair W1S 3AH



## The LUNA Series

A lighting system with infinite interpretations, the LUNA is a synergy of color, shape, and refracted light. Inspired by a lunar halo, the modular light fixture grows in every direction as its assembly system stems horizontally or vertically, stacking color upon color of various blown-glass shapes. The LUNA series is a glamorous reference to the moon's diffused light and soft glow. Allusive yet glamorous, the LUNA is a new tradition in glass-work and light form.

Available in a variety of colors and shapes, LUNA is a highly customizable fixture.

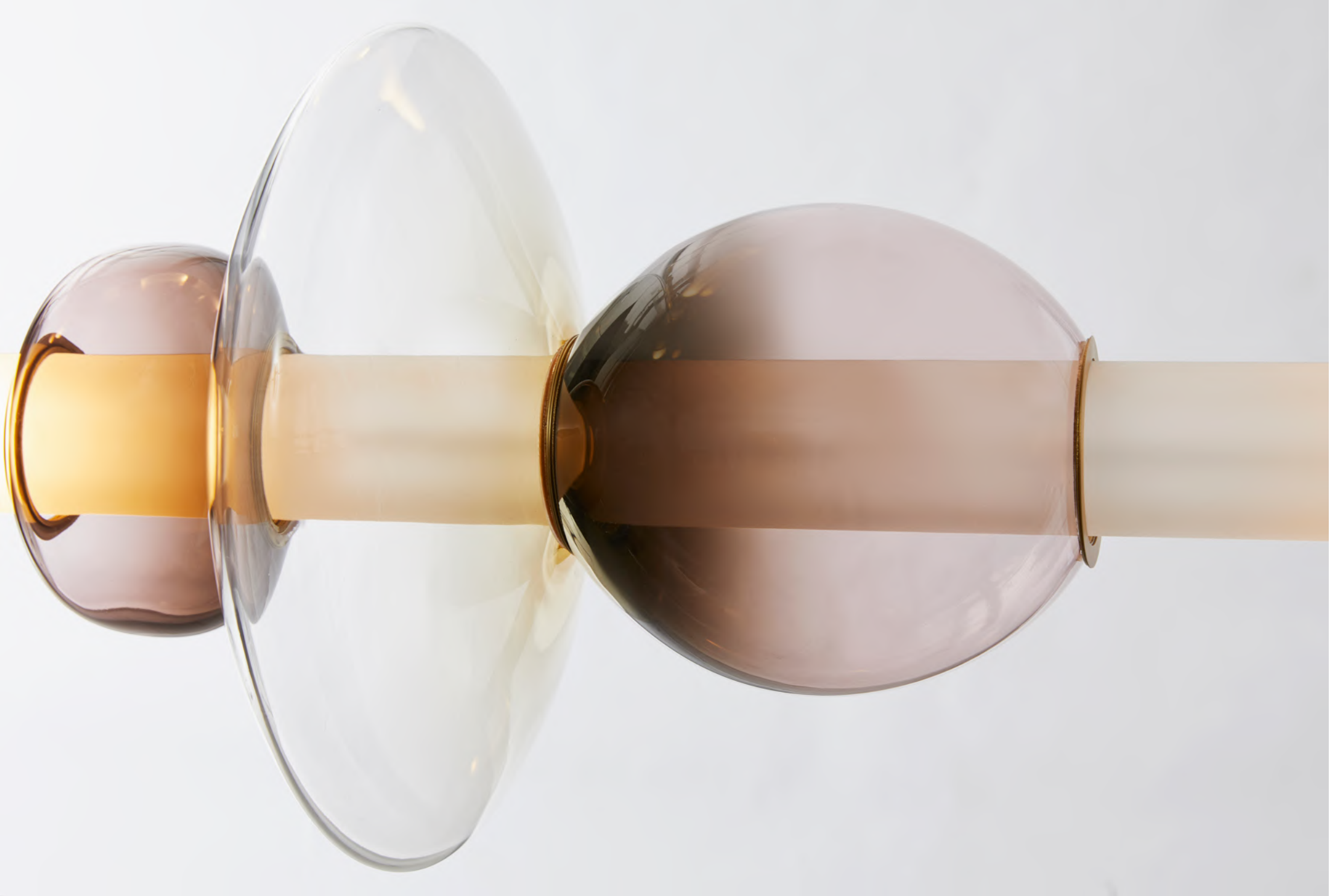
All GABRIEL SCOTT pieces are handmade in Canada.











## LUNA Pendant

Satin Brass Hardware  
Various Glass Globe Finishes

12" D x 32"H + DROP  
30.5cm D x 81cm D + DROP



# LUNA KALEIDO Collection

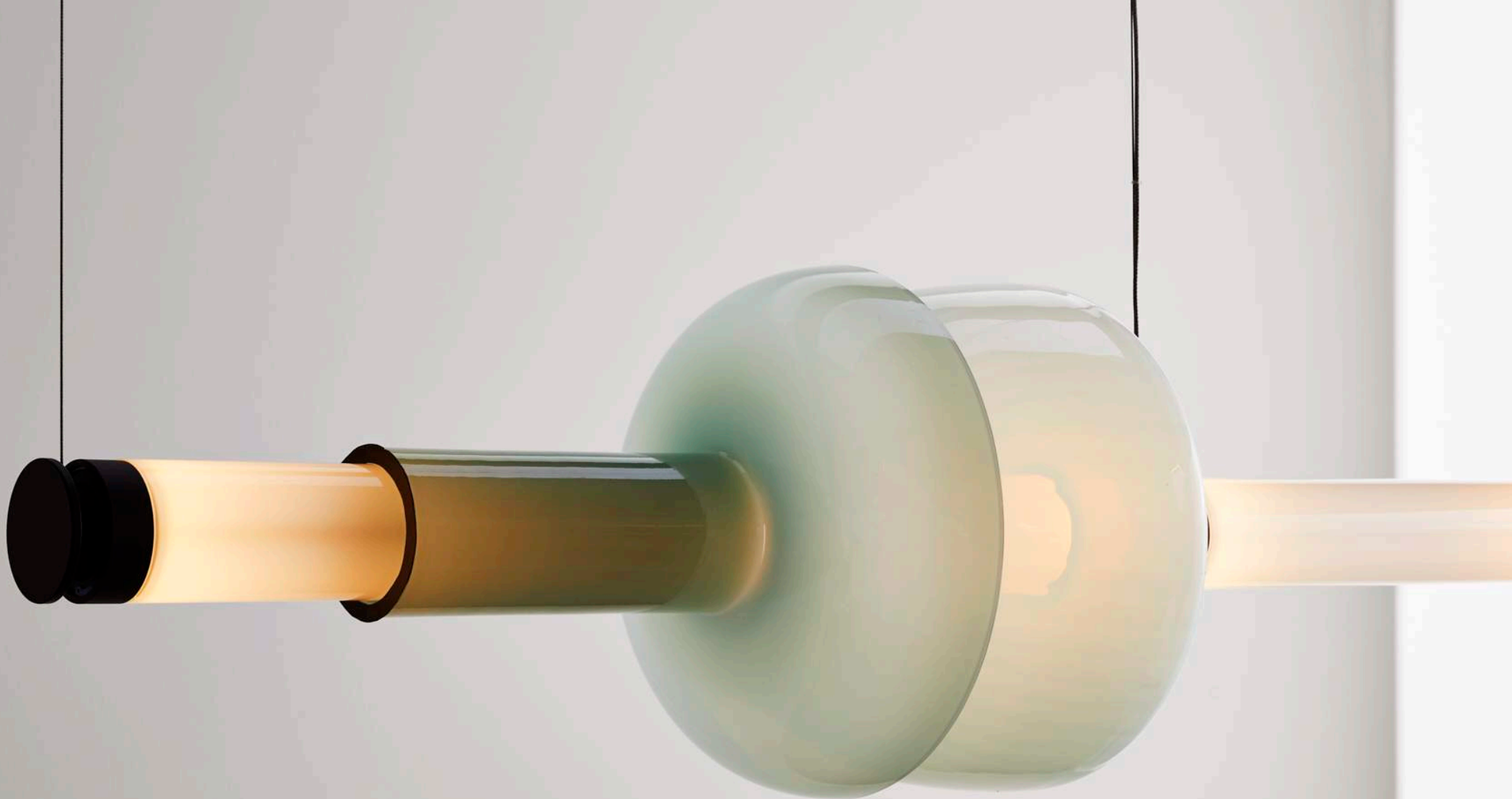
Inspired by a lunar halo, the LUNA is a highly customizable modular light fixture which grows in every direction as its assembly system stems horizontally or vertically. Stacking color upon color of various mouth-blown glass shapes, the series has been designed to offer infinite interpretations of tone, shape and refracted light.

The new Kaleido Collection plays with texture, color and shape to distort light and create magical optical illusions when looking through the glass. Combining soft iridescent colors with patterned textures and delicately shaped glass beads, the Kaleido Collection effortlessly brings together smoked gray, smoked bronze, opaque pink, opaque blue, opaque white and clear colored glass with six new textures and shapes.

All Gabriel Scott pieces are handmade in Canada.





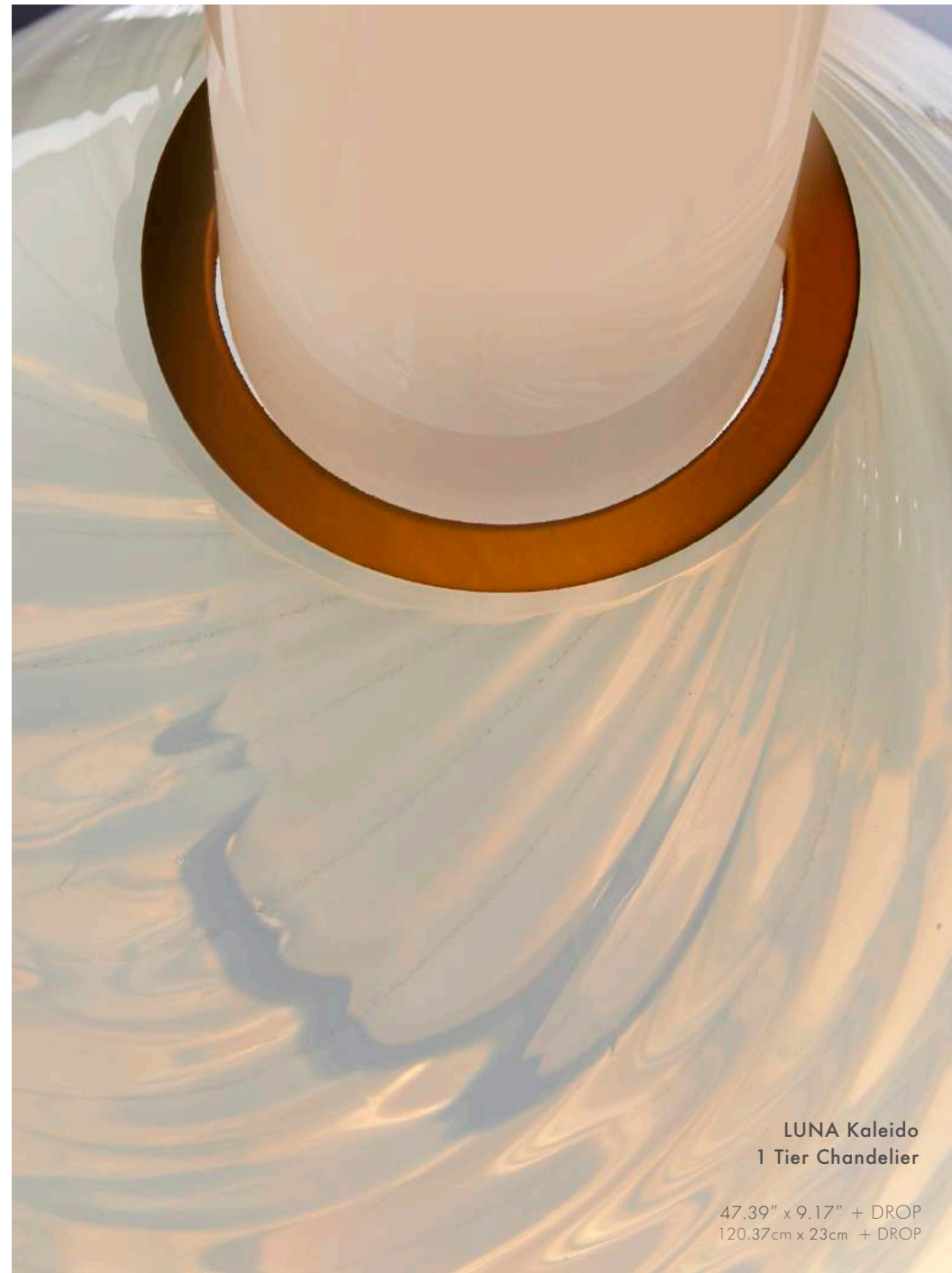




**LUNA Kaleido 1 Tier A Chandelier**  
With Orion & Aras Glass Beads

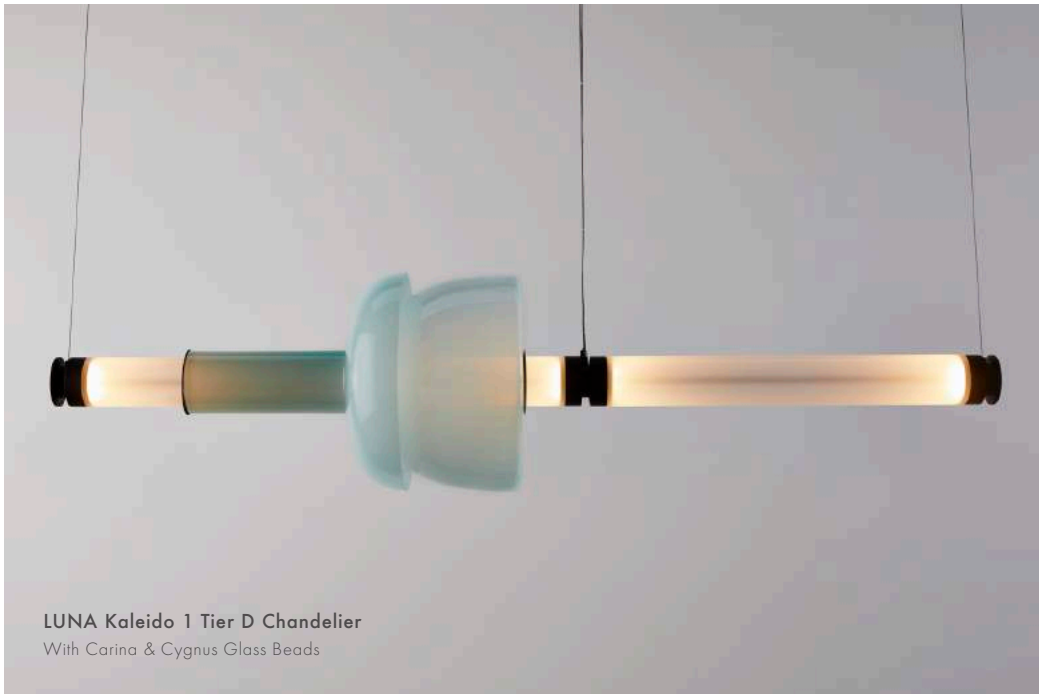


**LUNA Kaleido 1 Tier B Chandelier**  
With Cygnus & Lyra Glass Beads



**LUNA Kaleido  
1 Tier Chandelier**

47.39" x 9.17" + DROP  
120.37cm x 23cm + DROP





**LUNA Kaleido  
X-Long 1 Tier Chandelier**

61.41" x 9.58" + DROP  
155.9cm x 24.3cm + DROP



**LUNA Kaleido XL 1 Tier A Chandelier**  
With a Dorado Glass Bead



**LUNA Kaleido XL 1 Tier B Chandelier**  
With Cygnus, Carina & Orion Glass Beads







**LUNA Kaleido XL 2 Tier A Chandelier**  
With Dorado, Orion, Carina & Cygnus Glass Beads



**LUNA Kaleido XL 2 Tier B Chandelier**  
With Orion, Lyra & Aras Glass Beads



**LUNA Kaleido  
X-Long 2 Tier Chandelier**

98.52" x 22.71" + DROP  
250cm x 57.6cm + DROP

LUNA Kaleido  
Small Pendant

11.20" x 21.20" + Stem  
28.4cm x 53.5cm + Stem



LUNA Kaleido Small Pendant A  
With Cygnus & Aras Glass Beads



LUNA Kaleido Small Pendant B  
With Orion & Aras Glass Beads



LUNA Kaleido Small Pendant C  
With a Dorado Glass Bead







**LUNA Kaleido Large Pendant**  
With Cygnus & Lyra Glass Beads



**LUNA Kaleido  
Large Pendant**

27.20" x 11.20" + DROP  
69cm x 28.4cm + DROP

# LUNA A SERIES

LUNA A is the first release in the new Gabriel Scott product class, dubbed 'A SERIES' by the studio. This introduction of eight new lighting fixtures is based on the coveted design of the existing LUNA by Gabriel Scott. Inspired by a lunar halo, the elegant shapes of mouth blown glass reference the moon's diffuse light and soft glow. This allusive play of light that is rendered through a coordinated stacking of forms blown by master artisans in various gradient colored glass.

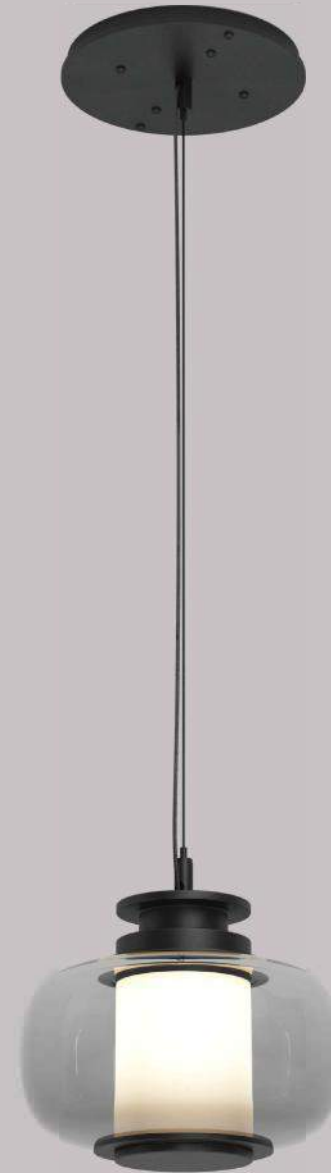
In keeping with the tradition of exquisite craftsmanship for which the studio is renown, the LUNA A paves the way for an innovative approach to accessible luxury to be explored through the new A SERIES.

All Gabriel Scott pieces are handmade in Canada.





**Luna Disc Sconce** Brass  
12" x 12" x 5.6" (304 x 304 x 142mm)



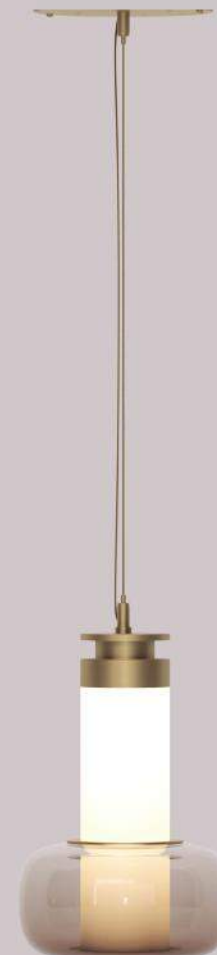
**Luna X-Small Pendant** Black  
6" x 6" x 6.22" (152 x 152 x 158mm)



**Luna Small Disc Pendant** Bronze  
12" x 12" x 10.75" (304 x 304 x 273mm)



**Luna Small Pendant** Brass  
6" x 6" x 10.75" (152 x 152 x 273mm)







Luna Small Disc Pendant Brass



Luna X-Small Disc Pendant Brass  
12" x 12" x 6.22" (304 x 304 x 158mm)



**Luna Round Sconce** Bronze  
8" x 8" x 4.45" (203 x 203 x 113mm)



**Luna Small Sconce** Black  
6" x 6" x 5.6" (152 x 152 x 142mm)



Luna Desk Lamp Black



Luna Desk Lamp Brass  
6" x 6" x 4.8" (152 x 152 x 122mm)



## The WELLES Series

A fixture of metallic proportion, GABRIEL SCOTT's signature WELLES is a modern piece that showcases expert artistry. Hollowed metallic polygons branch out into a modular system of interconnected configurations for a stunning optical illusion. With its endless possibilities, the WELLES floats in the air emitting a cloud of soft light through its multifaceted, sculpturally innovative silhouette. The WELLES is scaled to various shapes and sizes and can be assembled to horizontal, vertical, or diametric applications.

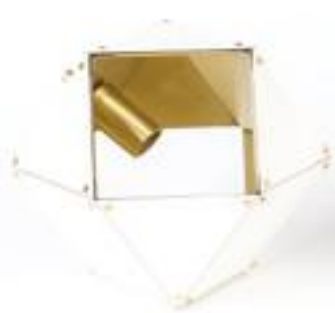
The WELLES has been developed to be highly customizable. Allow our in-house design team to assist in creating the perfect silhouette to match your project's needs. Available in black or white steel, satin brass, satin copper, or satin nickel.

All GABRIEL SCOTT pieces are handmade in Canada.

### **WELLES Long Chandelier**

As shown:  
Blackened Steel exterior, Satin Brass interior.  
60" x 18" x 18" H + DROP  
152.5cm x 45.5cm x 45.5cm H + DROP





Matte White /  
Satin Brass



Matte White /  
Satin Copper



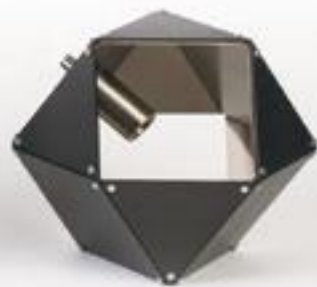
Matte White /  
Satin Nickel



Black Steel /  
Satin Brass



Black Steel /  
Satin Copper



Black Steel /  
Satin Nickel



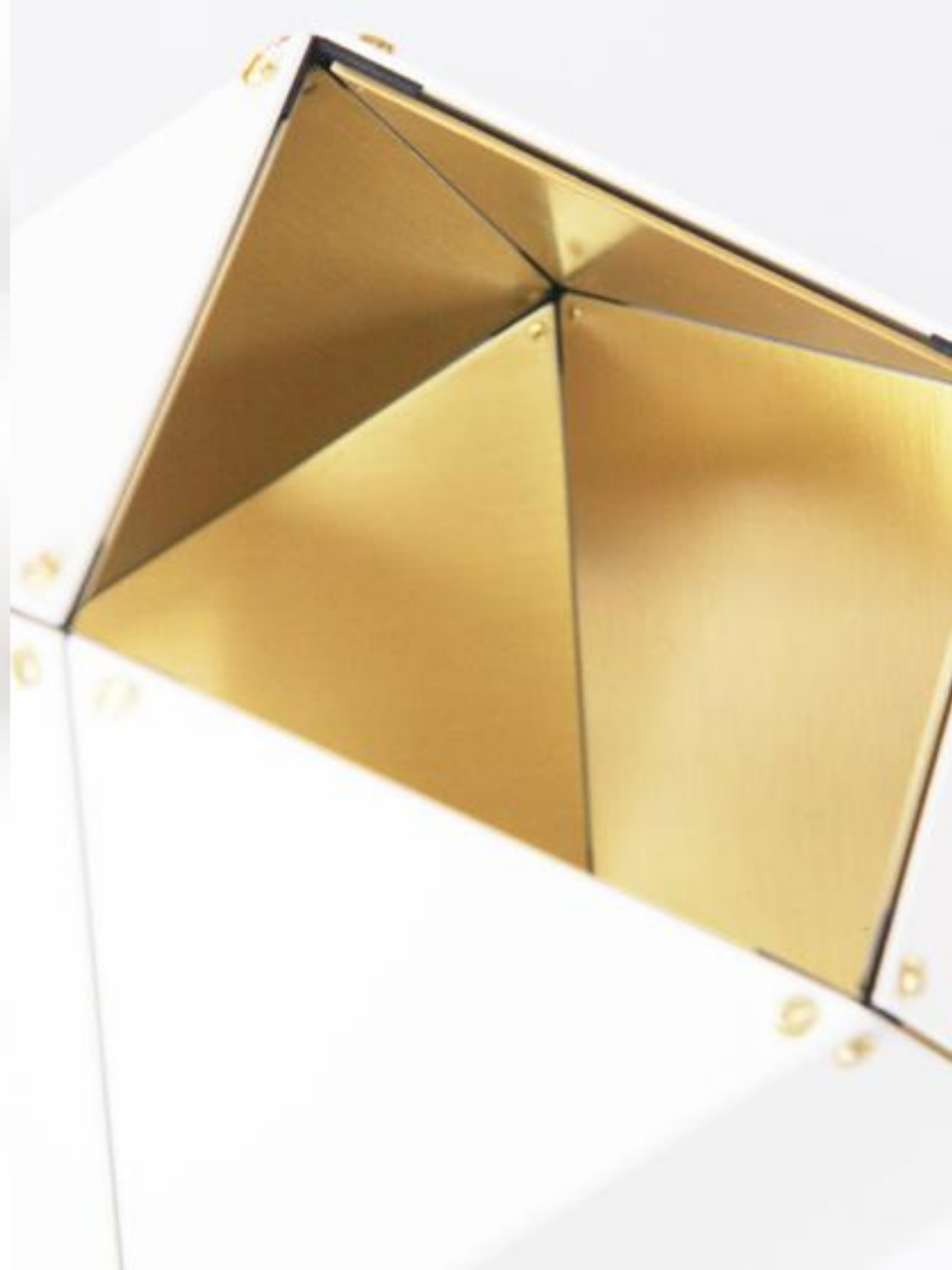
Satin Brass /  
Satin Brass



Satin Copper /  
Satin Copper



Satin Nickel /  
Satin Nickel







**WELLES Central**

As shown:  
Satin Copper exterior & interior  
Satin Brass exterior & interior  
28"D x 16" H + STEM  
71cm D x 40.5cm H + STEM



## WELLES Long Chandelier

As shown:

Matte White exterior, Satin Copper interior  
96" x 18" x 18" H + DROP

244cm x 45.5cm x 45.5cm H + DROP





## WELLES Wall Sconce

As shown:  
Blackened Steel exterior, Satin Brass interior

Single Head: 6 " x 6 " x 9 " from wall  
15cm x 15cm x 23cm from wall

Double Head: 6 " x 16 " x 9 " from wall  
15cm x 40.5cm x 23cm from wall





# The WELLES GLASS Series

A fixture inspired by jewelry, the WELLES Glass series is the brand's signature piece reinterpreted. The blown-glass collection balances a geo-metric and multifaceted shape with a soft, frosted glass encased in satin metallic prongs. Sculpturally innovative, the WELLES floats in the air diffusing a soft light through its alabaster white or smoked black prismatic glass. An interconnected silhouette in horizontal, vertical, and diametric applications available as a sconce or desk lamp the WELLES is a delicate yet striking statement piece with infinite possibilities.

The WELLES has been developed to be highly customizable. Allow our in-house design team to assist in creating the perfect silhouette to match your project's needs. Available in white or smoked glass, with black, brass, copper, or nickel hardware.

All GABRIEL SCOTT pieces are handmade in Canada.





**WELLES-Glass Long Chandelier**

As shown:  
White Blown-Glass, Satin Brass Hardware  
62" x 23" H x 19" + DROP  
157.5cm x 58.5cm x 48cm + DROP







Alabaster Glass / Polished Nickel



Alabaster Glass / Polished Copper



Alabaster Glass / Polished Brass



Alabaster Glass / Blackened Steel



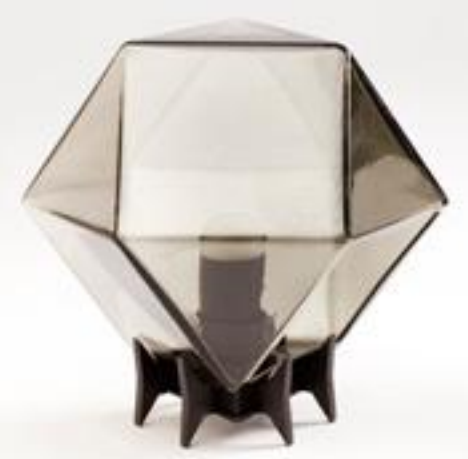
Smoked Glass / Polished Nickel



Smoked Glass / Polished Copper



Smoked Glass / Polished Brass



Smoked Glass / Blackened Steel



**WELLES-Glass Wall Sconce**

As shown:  
White Blown Glass, Satin Copper / Black Hardware  
8" x 13.5" x 8" from wall  
20.5cm x 33cm x 20.5cm from wall





## WELLES Double-Blown Glass Pendants

As shown:  
White, Smoked-Gray, and California-Pink  
Satin Copper and Satin Brass Hardware

7"Dia x 7.5"H + DROP  
18cm D x 19cm H + DROP



**WELLES Double-Blown  
Sconce & Hanging-Sconce**

As shown:  
White, Smoked-Gray,  
Satin Copper and Satin Brass Hardware  
7"Diax7.5"H + DROP  
18cm D x 19cm H + DROP







# WELLES TEXTURED GLASS

The Welles Chandelier is a true representation of Gabriel Scott's design philosophy - to design and make modular products to custom specifications. A modern piece that showcases expert craftsmanship, a series of hollowed polygons branch out into a modular system of interconnected configurations.

The new textured glass finish distorts light and creates magical optical illusions when looking through the glass. Textured glass is available in three textures - bubbled, ribbed or cracked and smoked, bronze and clear color options. Please refer to standard Welles tear sheets to view the full lighting collection and specifications.

All Gabriel Scott pieces are handmade in Canada



### **WELLES Textured Glass**

Available across the following WELLES fixtures:

WELLES Glass Long Chandelier  
WELLES Glass Single Wall Sconce  
WELLES Glass Double Wall Sconce

(Refer to the individual tear sheet for specifications)











## The MYRIAD Series

Evoking nature in its most elemental state, the MYRIAD blends sharp, articulated arms with soft, reflective light, for an overall arboreal feel. Lighting inspired by bio-luminescence, this sculptural light fixture diffuses a warm light through its double-blown glass pivoting at the tips of a modular, asymmetric system.

Expert craftsmanship met with clever engineering, the MYRIAD is available in various metal and glass finishes. Custom sizing available.

All GABRIEL SCOTT pieces are handmade in Canada.



**MYRIAD X-Long 13 Chandelier**

Satin Brass Frame

White Double-Blown Glass

80" x 20" x 29" H + STEM

203cm x 51cm x 73.5cm H + STEM





GABRIEL SCO





**MYRIAD Wishbone Pendant**

Black Frame

White Double-Blown Glass

14" x 9" x 30.61" H + STEM

35.5cm x 23cm x 77.5cm H +STEM








## The **BRIOLETTE** Series

A powerful warm light diffused through double-blown glass, the BRIOLETTE showcases striking prismatic contours held by the brand's signature metallic prongs. A dynamic interplay of sharp and delicate, the satin brass, nickel, copper or black steel hardware grips its jewel, drawing the eye to its unforgettable hand-sculpted shape. Double-blown glass is available in alabaster white.

All GABRIEL SCOTT pieces are handmade in Canada.



### **BRIOLETTE Small & Large Pendants**

Shown in White & Soft Pink Blown-Glass

Satin Brass and Copper hardware

Small: 9" D x 11.5" H + STEM

23cm D x 29cm H + STEM

Large: 13" D x 16.5" H + STEM

33cm D x 42cm H + STEM





## The HARLOW Series

A veritable showstopper, the HARLOW Series offers an elegant starburst of light that reflects and refracts through its mold-blown glass shade. A sparkling prism, the HARLOW is directly inspired by the world of jewelry with its metallic frame encasing a translucent glass adding a touch of glamour to any space.

The HARLOW is available in chandelier, pendant, and wall sconce form. Custom sizing available.

All GABRIEL SCOTT pieces are handmade in Canada.





**Large HARLOW Chandelier**

Satin Brass Frame

Alabaster-White Blown-Glass

76" x 34" x 42" H + STEM

193cm x 86.5cm x 106.5cm H +STEM



Also shown:  
PRONG Console  
PRONG Mirror







**Large HARLOW Chandelier**

Satin Brass Frame

White Blown-Glass

76" x 34" x 42" H + STEM

193cm x 86.5cm x 106.5cm H + STEM





**HARLOW Dried Flowers**

Satin Copper Frame  
White Blown-Glass  
28" D x 62" H + STEM  
71cm D x 157.5cm H + STEM

Also Shown:  
**PRONG Dining Table**



**Small HARLOW Chandelier**

As shown:

Satin Brass Frames

White Blown-Glass

32" x 32" x 36" H + STEM

81cm x 81cm x 91.5cm H + STEM







### HARLOW Pendants

Satin Brass Frame, White Blown -Glass  
Satin Copper Frame, White Blown -Glass

Large: 20" D x 18" H +STEM  
51cm x 45.5cm H + STEM

Small: 14" D x 12" H + STEM  
35.5cm D x 30.5cm H + STEM



## HARLOW Wall-Sconce

As shown:

Satin Copper Frame, White Blown -Glass

Satin Brass Frame, White Blown -Glass

13" x 12" x 6" from wall

33cm x 30.5cm x 15cm from wall







## The **KELLY** Chandelier

A chandelier that moves with glamorous intrigue, the KELLY Chandelier's metallic chain cascades through its various layers to create a glisten reflective effect. A bold synergy of cold metal with warm light, the black or brass frame hosts a matching chain that brightens any interior with midnight color. With its Art Deco sensibility, the KELLY Chandelier is a transitional light fixture of exemplary proportion.

Available in small, large, and extra-long. Custom sizes available.

All GABRIEL SCOTT pieces are handmade in Canada.



### **KELLY Chandelier Black**

Black Steel Blades, Satin Brass Hardware

1/2 Kilometer of Black & Silver Chain

32" x 32" x 40" H + STEM

81cm x 81cm x 101.5cm H + STEM







### **KELLY Chandelier Brass**

Satin Brass Finish Blades & Hardware  
1/2 Kilometer of Brass Chain  
32" x 32" x 40" H + STEM  
81cm x 81cm x 101.5cm H + STEM



**KELLY Chandelier X-Long**

As shown:  
Satin Brass Blades, Hardware & Chain  
74"x32"x38"H + STEM  
188cm x 81cm x 96.5cm H + STEM







With a background in architecture, industrial design and jewelry making, Scott Richler brings a multidisciplinary set of skills and style to the furniture & lighting world as GABRIEL SCOTT, a chic and contemporary line of furniture and lighting fixtures.

All GABRIEL SCOTT pieces are handmade in their Montreal production studio where the young visionaries work together alongside their in-house team of industrial designers, engineers, and manufacturers to create and oversee each piece from inception to production. GABRIEL SCOTT's studio is located in Montreal's historically rich Garment District, a neighbourhood that pioneered Canadian fashion and design.

Since 2014, the exclusive line has been available to view at their flagship showroom, located in the beautifully restored Brewster Carriage House at the corner of Broome and Mott Streets in downtown Manhattan, and is now available in their London Showroom, Mayfair.





GABRIEL SCOTT

EST. 2012

[www.gabriel-scott.com](http://www.gabriel-scott.com) - [info@GabrielScott.com](mailto:info@GabrielScott.com)

@gabrielscott  