

Caboche, terra

by Patricia Urquiola , Eliana Gerotto

FOSCARINI



DESCRIPTION

Rich, bright and sophisticated, the Caboche lamp is a mosaic of refractions, a perfect fusion of different personalities in the one form, coming together to create the body and light effect of the lamp. When it is turned on, the light diffuses from inside the spheres like lots of bright crystals, providing 360° lighting of the surrounding environment and guaranteeing both upward and downward lighting. Caboche floor lamp is a small jewel of creativity and technology, available in two sizes and two versions: transparent and yellow gold. The original design of the stem is created by the three supports that join together to form the round base, recalling the spherical form of the diffuser, and thus guaranteeing a combination of coherence, originality and lightness. Caboche is the perfect protagonist for homes or public areas, uniting visual impact with lightness, decorative value and functionality.

MATERIALS

Polymethylmethacrylate, blown glass, chromed metal and varnished aluminium

COLORS

Gold, Trasparent

Caboche, terra

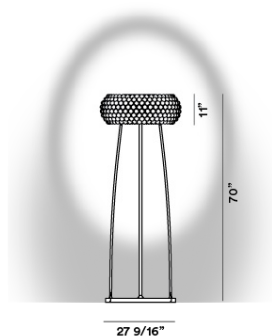
technical details

FOSCARINI

Floor lamp with diffused, direct and indirect light. Satin finish blown glass internal diffuser, satin finish opaline glass lower screen. External diffuser consisting of a crown of polycarbonate arches secured to a chromed metal mount and PMMA spheres. Round die cast aluminium base and epoxy powder coated extruded aluminium rods. The transparent cable is fitted with a dimmer which can be used both to adjust the level of luminous intensity gradually or as the ON/OFF switch.

Caboche grande

SCHEMATIC & LIGHT EMISSION



MATERIAL

Polymethylmethacrylate, blown glass, chromed metal and varnished aluminium

COLORS



ACCESSORIES

Caboche

LIGHT SOURCE

200WRSC

CERTIFICATIONS

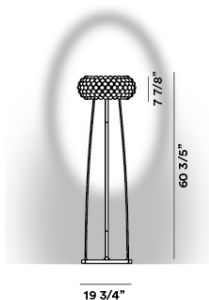
Caboche, terra

technical details

FOSCARINI

Caboche media

SCHEMATIC & LIGHT EMISSION



MATERIAL

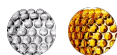
Polymethylmethacrylate, blown glass,
chromed metal and varnished
aluminium

LIGHT SOURCE

150WRSC

CERTIFICATIONS

COLORS



ACCESSORIES

Caboche

Caboche, terra

Designer

FOSCARINI

PATRICIA URQUIOLA

An internationally renowned architect and designer, Patricia Urquiola has received multiple major acknowledgements such as the “Designer of the Decade” title from the Home and Häuser magazines, and “Designer of the Year” from Wallpaper, Ad Spain, Elle Decor International and Architektur und Wohnen Magazine.

Some of her projects are exhibited in several museums and collections. Together with Eliana Gerotto, industrial designer, curator of outfits and interior decorator, she has designed Caboche, a precious, luminous emotion that stems from a combination of technology and creativity.



Caboche, terra

Designer

FOSCARINI

ELIANA GEROTTO

A Venetian, she obtained her diploma in Communication Techniques in Milan. She has worked as a graphic designer for the Parisian magazine, Elle, and for the Venice Biennale, while she co-operates with some major Italian brands as image and product consultant.

Her creative entrepreneurship drives her towards ever-differing professional experiences, from interior designs to furnishings and even jewellery. Together with Patricia Urquiola, she has designed Caboche, a precious, luminous emotion that stems from a combination of technology and creativity.

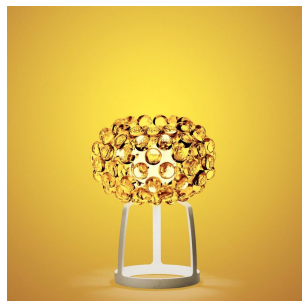


Caboche, terra
family

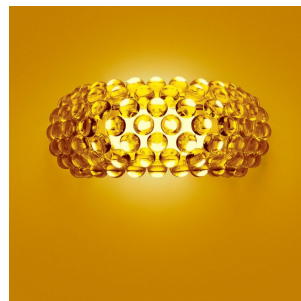
FOSCARINI



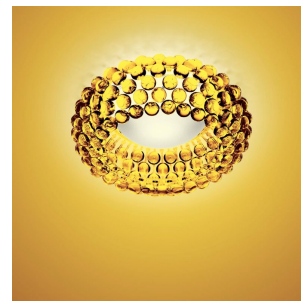
Caboche



Caboche



Caboche



Caboche