

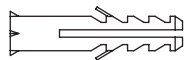
MANTIS

bs 5 mini (us)

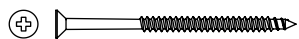
by Bernard Schottlander

**INSTRUCTION & USE SHEET**

## IN THE BOX

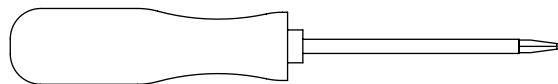


×3



×3

## REQUIRED TOOLS



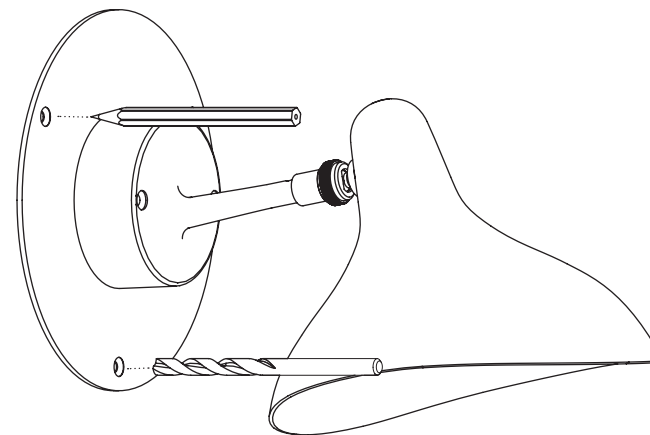
Ø7

## WARNING

The safety of this fixture is only guaranteed if the instructions have been observed. — Always disconnect power before working on fixture. — Fixture must not be installed in any position other than that shown in instructions. — Assembly and maintenance of fixture must be performed carefully so as not to damage components. — Replacement bulbs must be of same type and wattage as specified in instructions. — Metal surfaces, glass or other parts of fixture may be cleaned with a soft damp cloth and mild detergent.— DCW ÉDITIONS will replace merchandise with manufacturing defects only if it is returned to the retailer from which it was purchased. — If you are unsure about your wiring, please consult a qualified electrician. The damaged cables should be changed by manufacturer or distributor or qualified electrician.

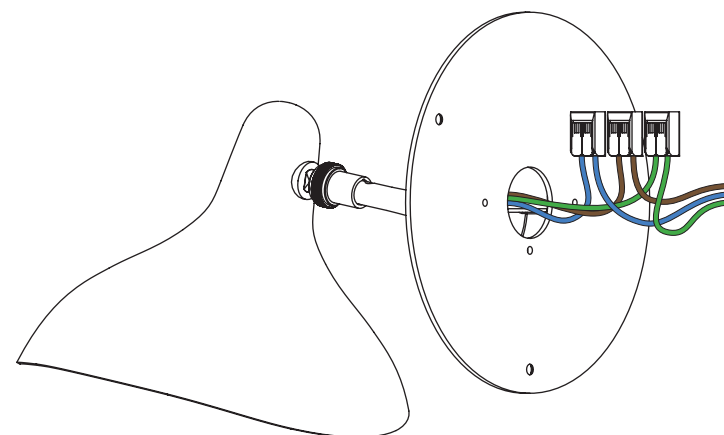
# STEP 1

Mark, then make holes Ø7



# STEP 2

Connect the 3 wires with the WAGO® connectors



# STEP 3

Fix the cast to the wall with provided screws

