



lens

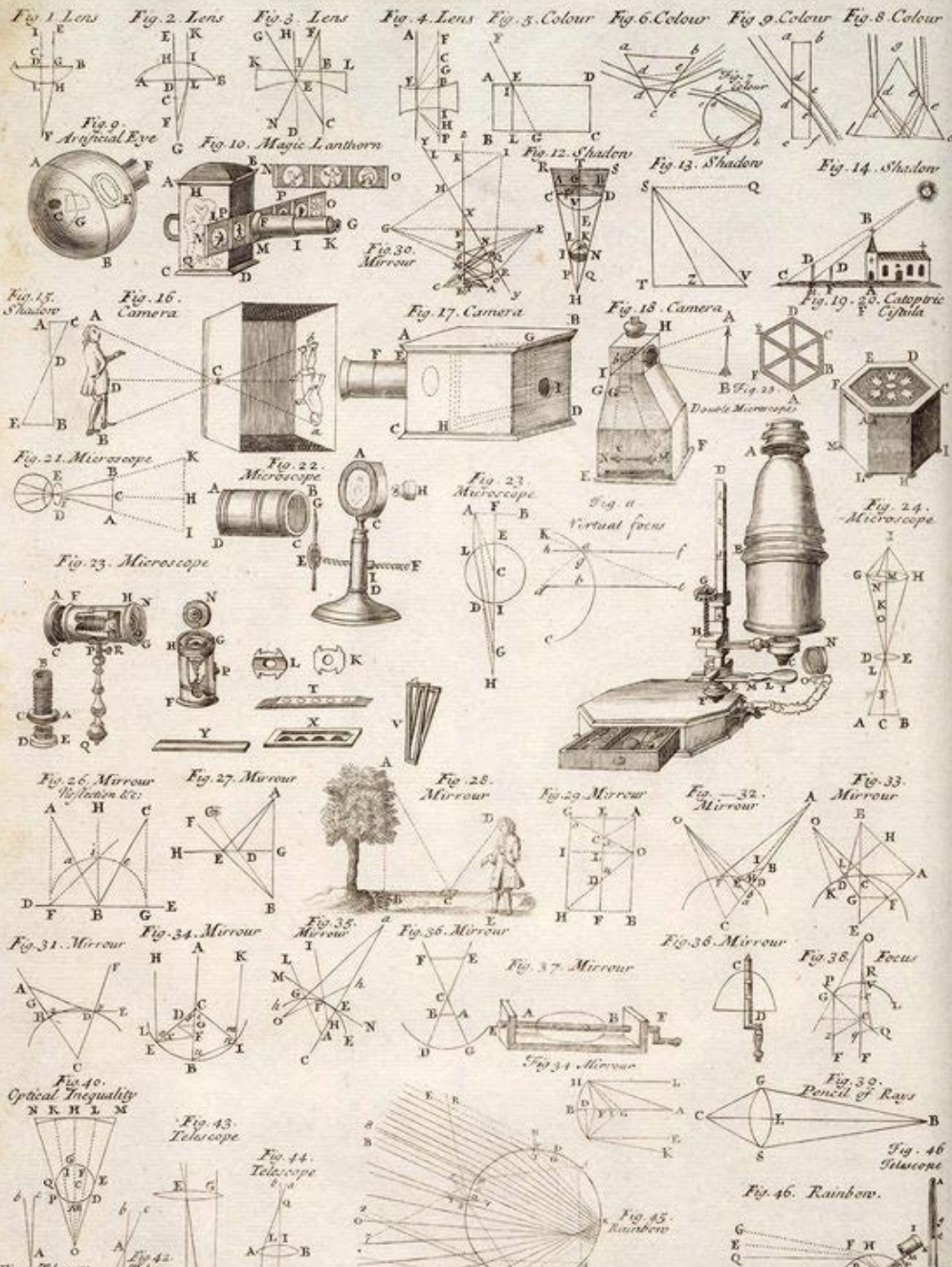
loomma



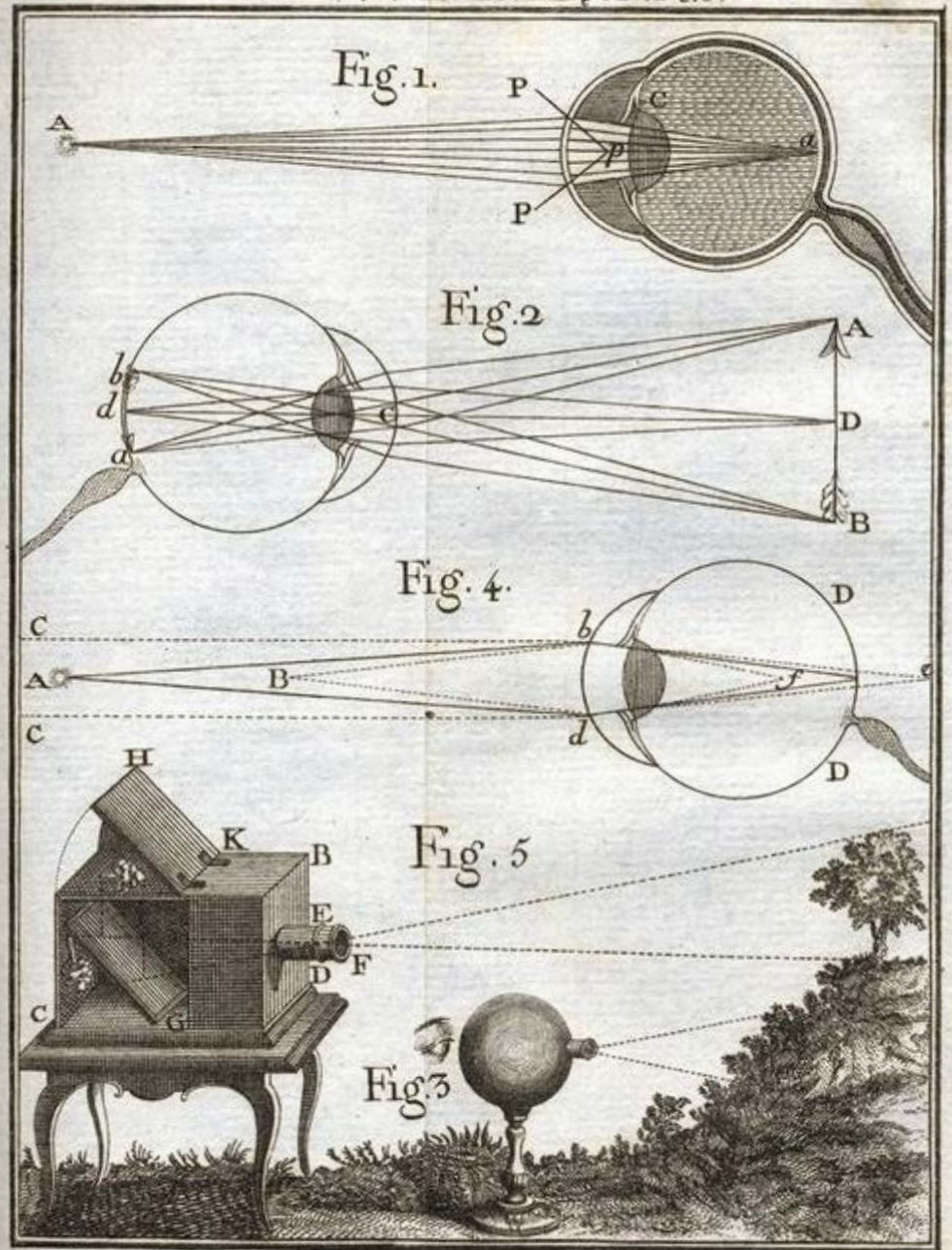
inspiration

Tab. OPTICKS.

Page 667



TOM. V. XVII. LEÇON. PL. 5.



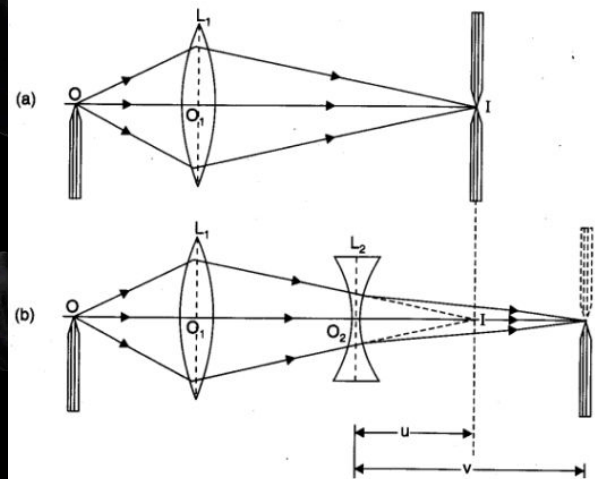
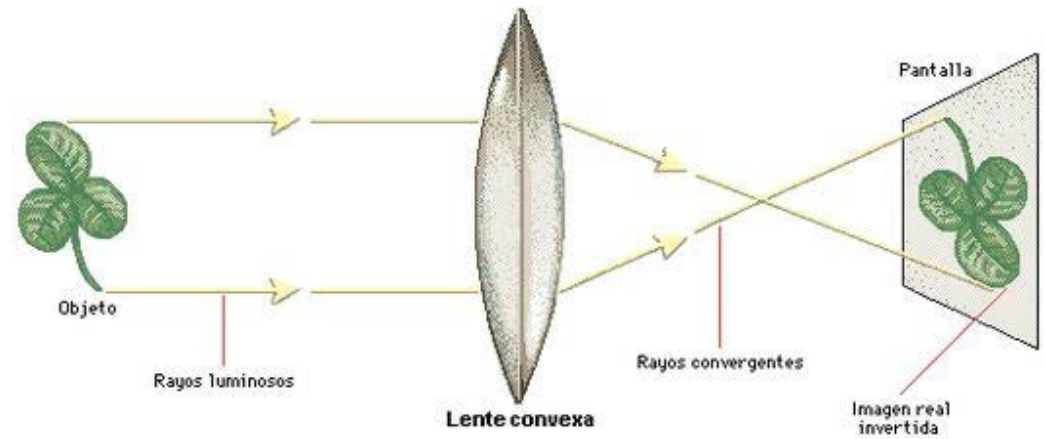


Fig. Focal length of a concave lens.

LENS

The perfect optics of pure crystal.

Light refracted through a lens is the fundamental principle of optics. Here, two lenses harmoniously encapsulate their interior source, playing a symphony of lights. Classic clear crystal is offset by a single color that highlights its refraction. A hypnotic design, asking only unique composition and arrangement.

Design by Studio deFORM

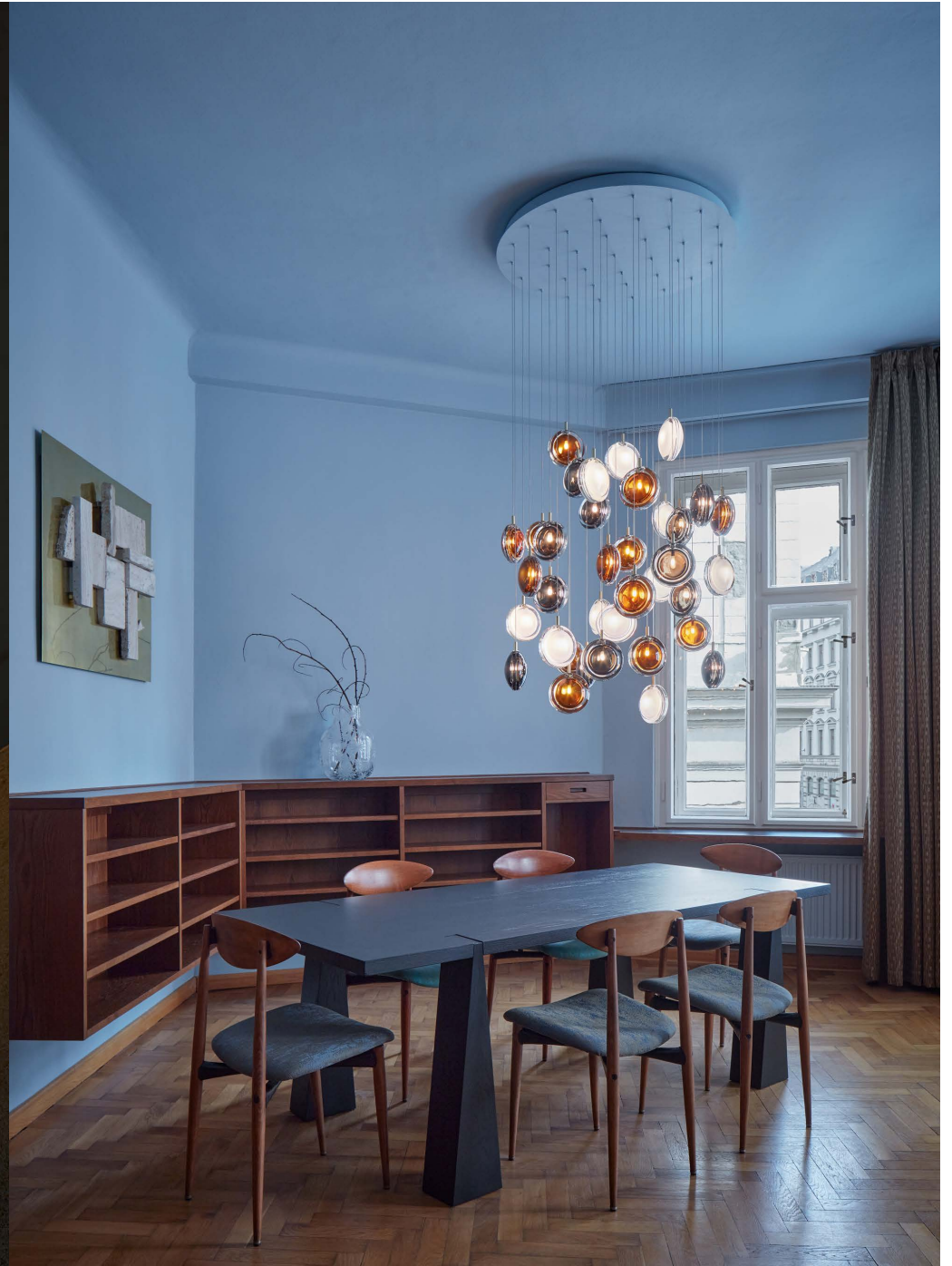
production



projects



BOMMA catalogue, 2021



BOMMA Atelier, Prague. 2021



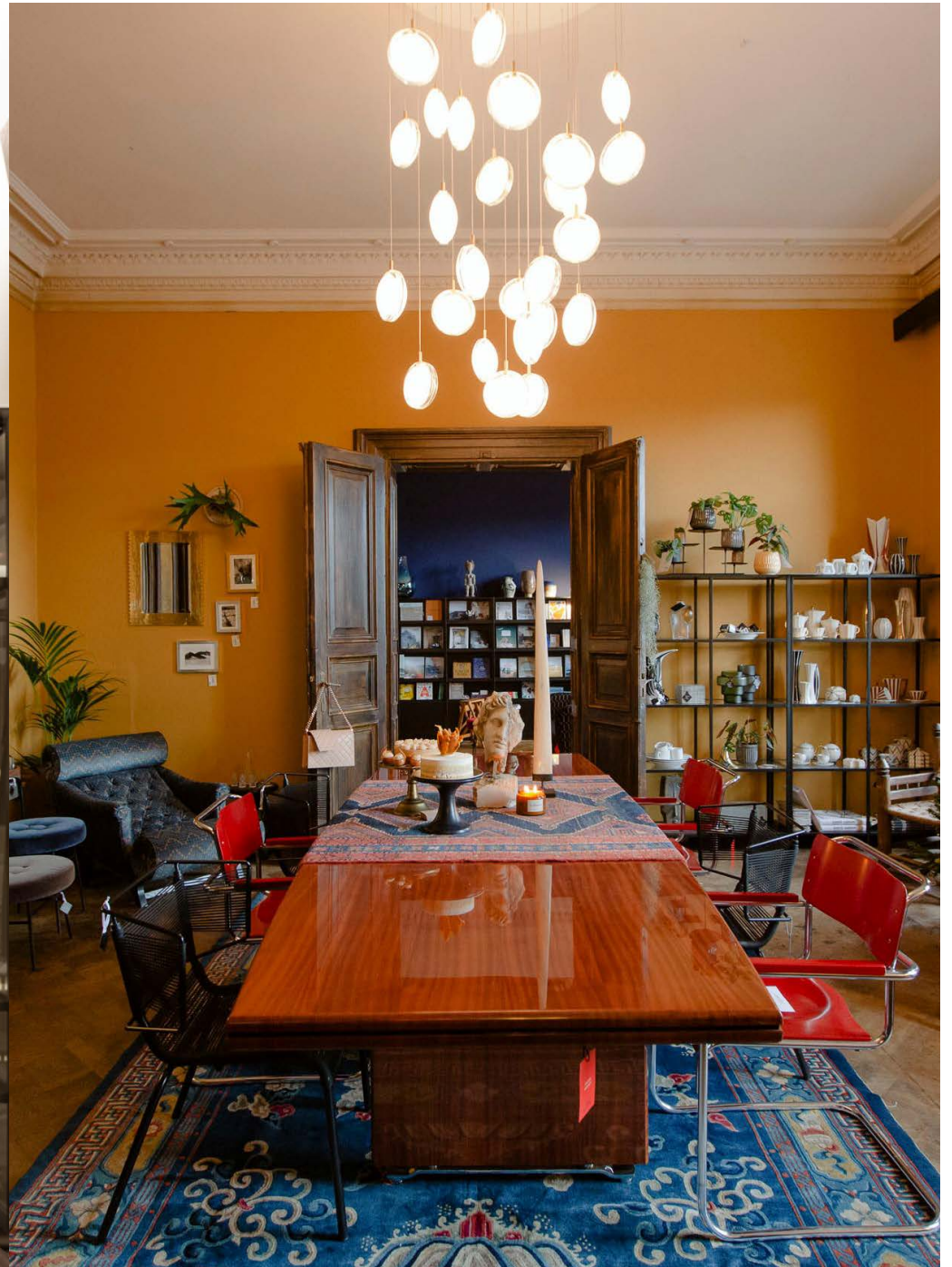
Installation of 12 pcs - visualization



Bulthaup showroom, Prague, 2020



Espacio Home Design, Mallorca, 2020



Highlights by LEMARKET, Prague, 2020



Installation of 41 pcs of smoke and clear Lens



Installation of 55 pcs



Installation of 116 pcs



Winery Chaloner, South Africa, 2022 - Installation of 26 pcs of smoke, amber and clear

options



clear
brushed gold



white
brushed gold



blue grey
brushed gold



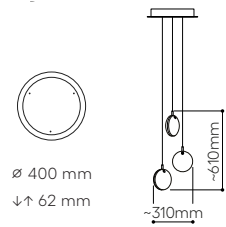
amber
brushed gold



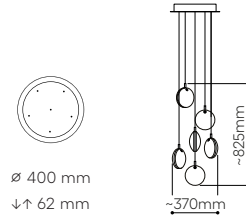
smoke
brushed gold

pendant

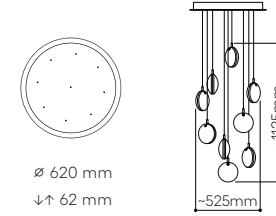
Glass options: clear, white, amber, smoke,
blue grey
Fitting options: brushed gold



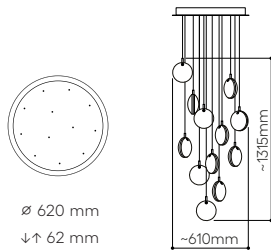
3 pendants



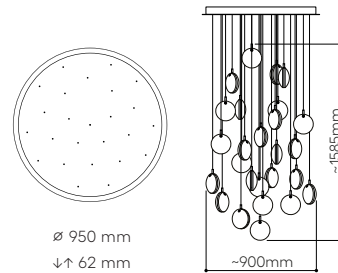
6 pendants



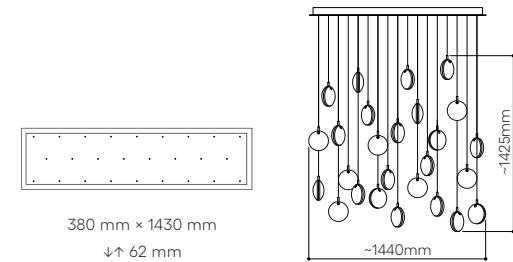
9 pendants



12 pendants



26 pendants



26 pendants
rectangular

chandeliers

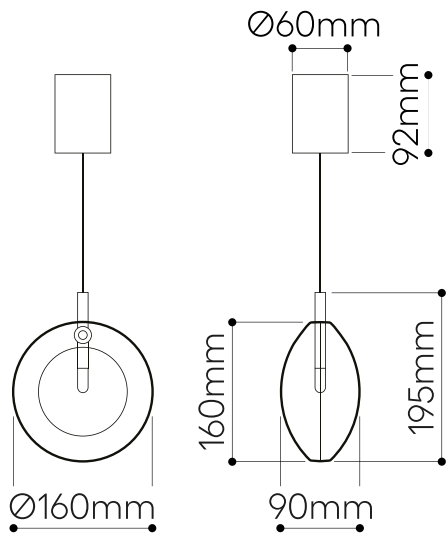
technical informations

LENS pendant

Design by
Studio deFORM

The Lens Collection is made by our in-house developed, pressed glass technology. Any small bubbles, non-melts and irregularities in the glass are both proof and a characteristic feature of this unique glassmaking process.

The glass parts of Lens are hand-painted, so the intensity of color may vary slightly.



LIGHTING DESCRIPTION

Size	160 × 195 × 90 mm 6,2 × 7,7 × 3,5 inch
Cable	transparent 2,5 m / 98,4 inch
Weigh	2,5 kg / 5,5 lb
Material	lead-free crystal in white, clear, amber, smoke, blue grey
Mounting Materials	brushed brass
Mounting Colors	brushed gold
Protection	IP 20
Nominal voltage	220-230V / A.C. 50 hz (EU) 100-120 V / A.C. 60 Hz (USA)
Class	II. EU / I. USA

LIGHT SOURCE

Type	G4, 1,2W LED, 120 lm
Base	G4 (EU) / G4 (USA)
Voltage	12V, AC
Temperature	2700 K
Color index	RA 90+
Dimming	Dimmable with 0/1-10VDC, on demand dimmable with TRIAC.

TRANSFORMER

Primary	100-240V, 50/60 Hz, 0,04A
Secondary	DC 700mA (0,5V-4V) 1×3W

PACKAGING

Material	Cardboard
Size	230 × 220 × 220 mm 9 × 8,6 × 8,6 inch

Origin: traditionally produced in the Czech Republic
Intellectual property license holder: Bomma Czech Republic (EU)
represented by Bohemia Machine s.r.o.

BMRC Group s.r.o.
Hvězdova 1716/2b,
Prague 4, 140 00,
Czech Republic

info@bomma.cz

step beyond