

TREAD SP

TECHNICAL DATA:



LED230V
2700K
DIM2

1x8w

100-120 v
50/60HZ

LED230V
3000K
DIM2

1x8 W

100-120 v
50/60HZ

CERTIFICATIONS:

Led 2700 K 8 W 230 V 700 lm DIM2 Phase Cut

Led 3000 K 8 W 230 V 800 lm DIM2 Phase Cut

VOLUME Mc 0

GROSS WEIGHT Kg 7

NET WEIGHT Kg 6

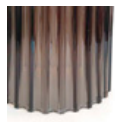
[download](#)



SHADE FINISHING



CRTR



FUTR

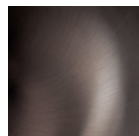


TBTR

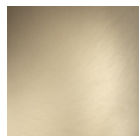


VATR

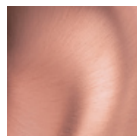
FRAME FINISHING



BHS



BKS



RAS